

PADILLA & ASSOCIATES
A R C H I T E C T S

1925 Aspen Drive • Suite 801 A • Santa Fe, NM 87505 • 505.471.5727 • Fax 471.5799

February 26, 2003

James M. Hewat
Historic Preservation Planner
Planning Division
Planning & Land Use Department
City of Santa Fe

Re: Walkway extension and site improvements
Cathedral Park/Marian Hall

Mr. Hewat,

Upon request from the Cathedral Park Committee and the City of Santa Fe, Marian Hall, LLC has been asked to participate in additional upgrades to the Cathedral Park design and improvements. This submittal includes requests of the Owners to extend the existing brick walkway design to the East from Cathedral Park and to remove the existing concrete sidewalk on the West side of Marian Hall and replace it with a brick walkway to the Palace Avenue gate.

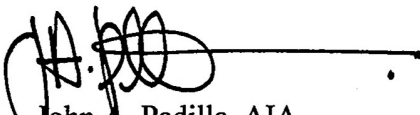
Included in this submittal is the request from the City of Santa Fe and the Cathedral Park Committee to construct a new low sandstone wall with wrought iron fence detail to match the North fence line detail of St. Francis Cathedral. This fence would extend North from the Cathedral fence line matching the heights and details and terminate in line with the parking lot. Also, included is the installation of a new fountain in the brick walkway area to reflect the fountain that has been seen in the attached historical photos.

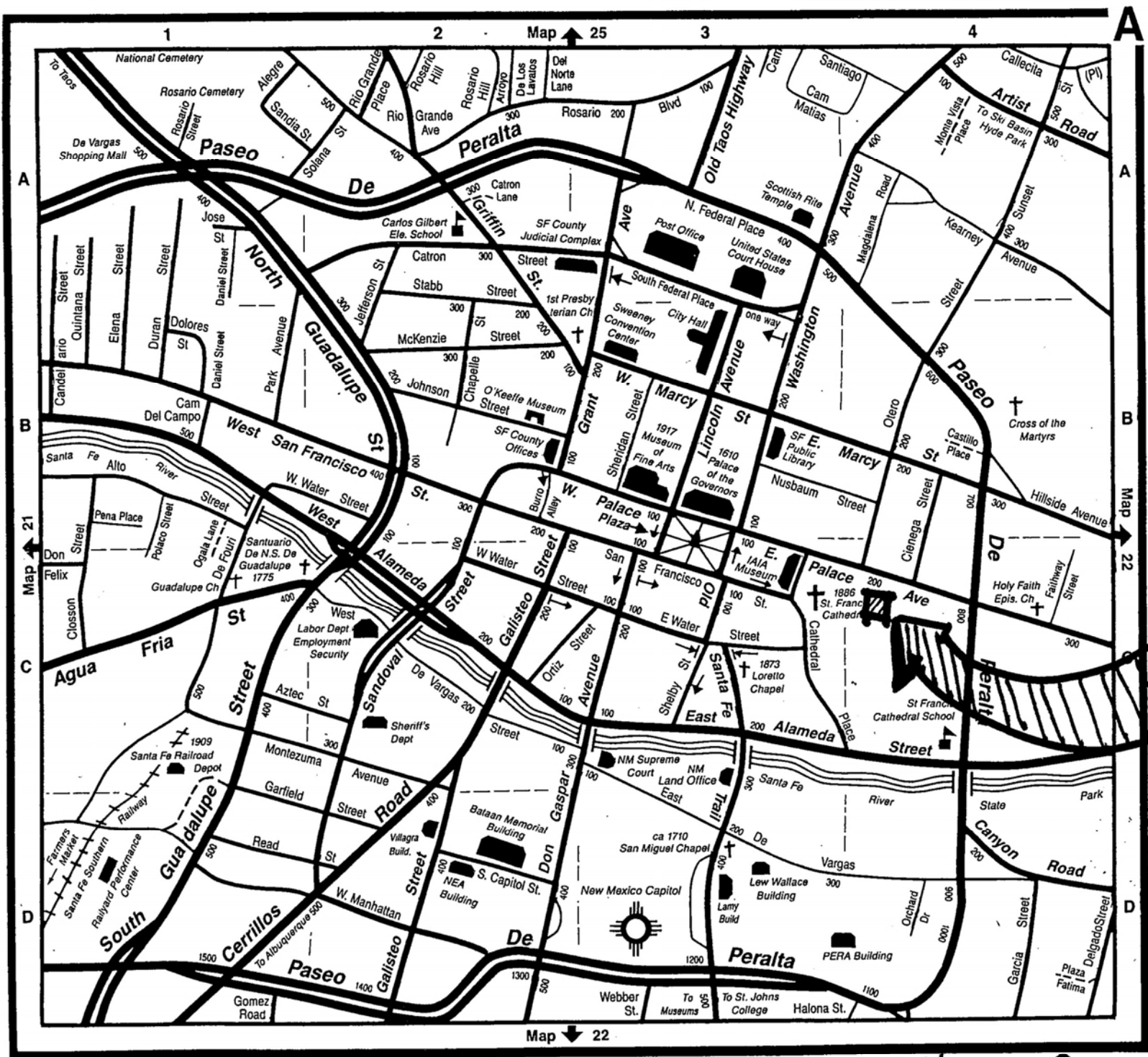
This work is being undertaken by Marian Hall, LLC as a cooperative measure with the City of Santa Fe and the Cathedral Park Committee to successfully terminate the Cathedral park improvements to the east and to tie into Marian Hall.

Padilla & Associates Architects wishes to submit the required documents for review and approval by the Historic Design Review Board at their meeting of March 18, 2003.

Should you have any questions please do not hesitate to contact my office.

Respectfully,


John A. Padilla, AIA
Principal

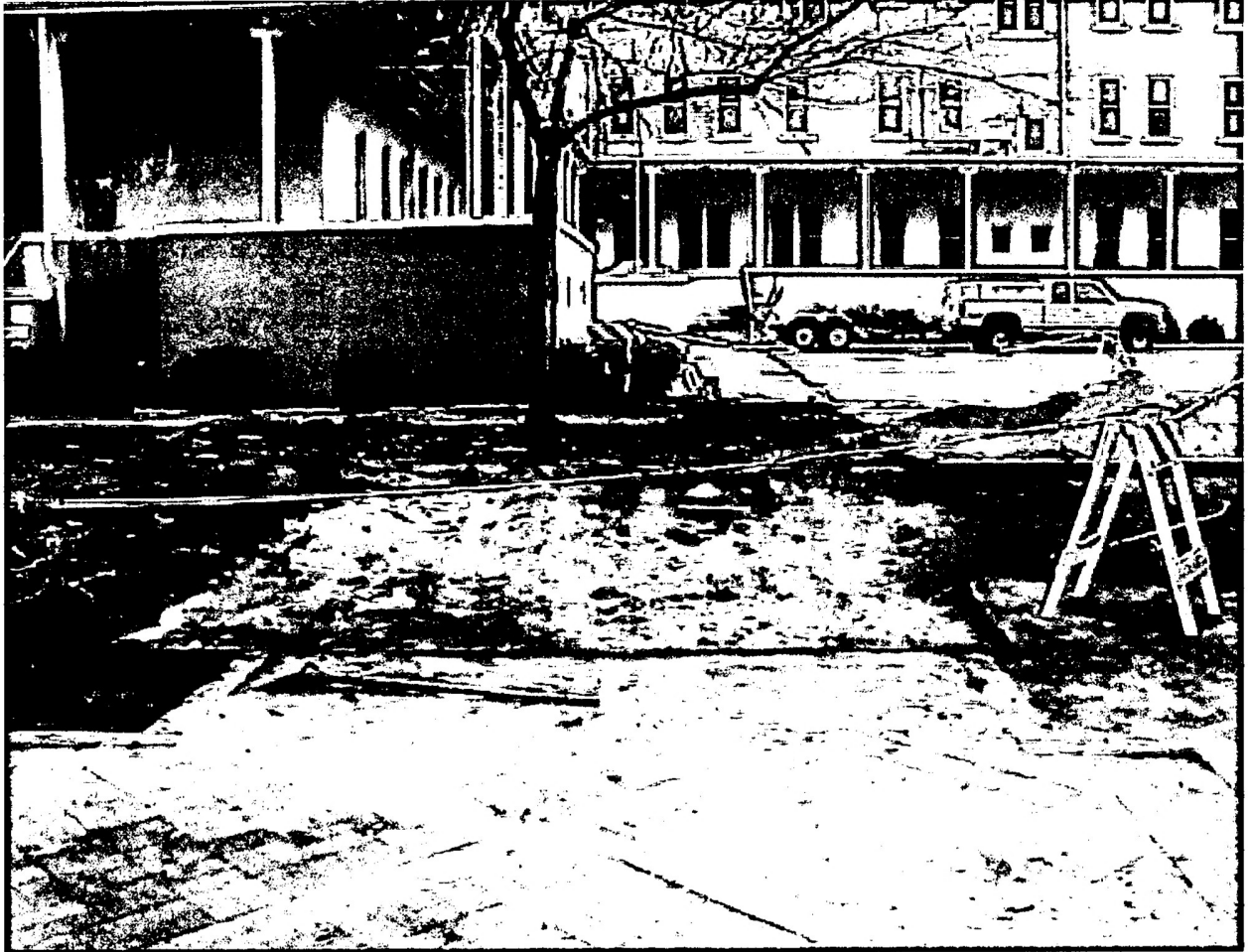


PROJECT SITE

DOWNTOWN AND EASTSIDE



- VIEW TOWARDS CATHEDRAL PARK -



- VIEW FROM CATHEDRAL PARK -



- WEST SIDE OF MARIAN HALL -



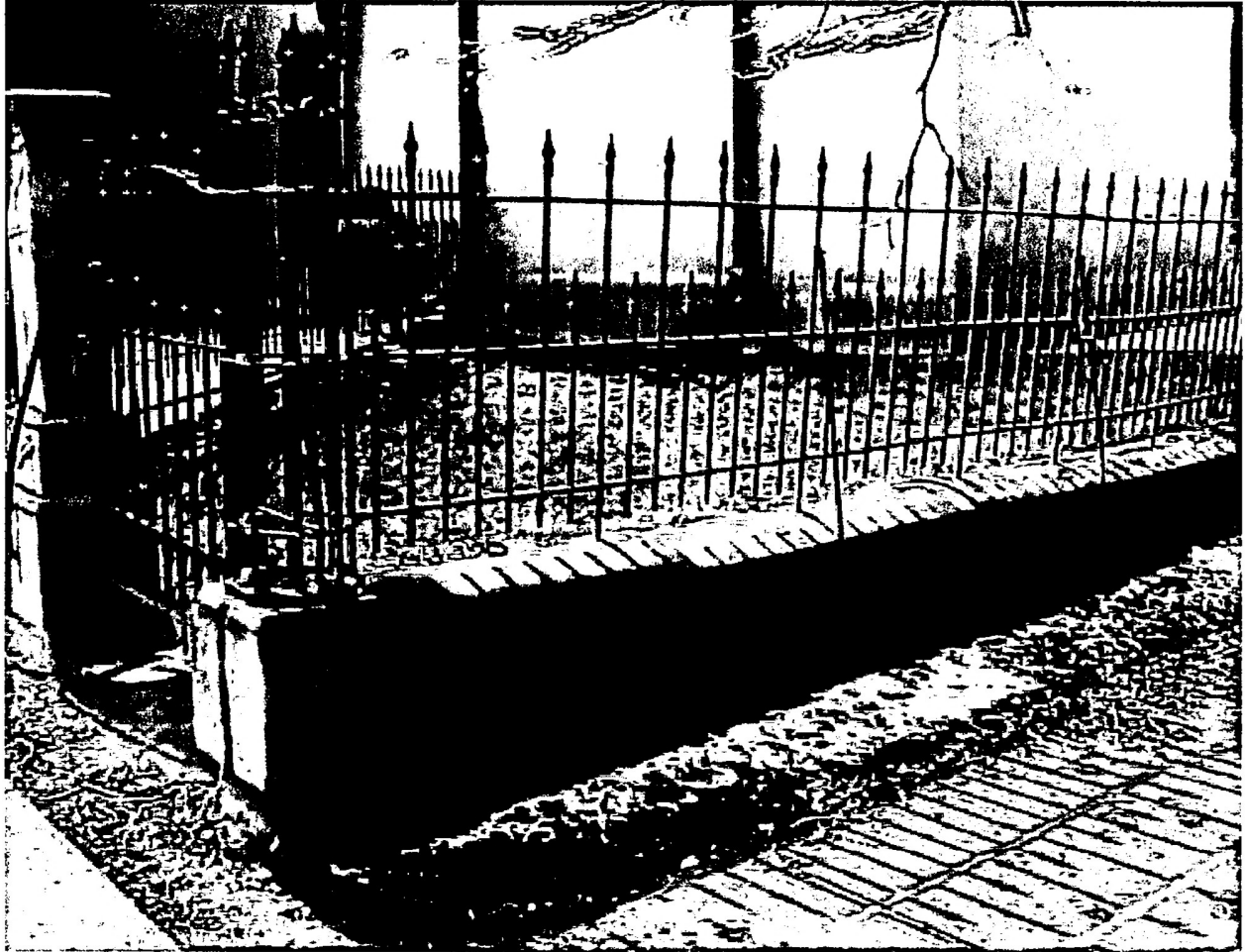
- WEST SIDE OF MARIAN HALL -



- VIEW OF WEST SIDE OF MARIAN HALL -



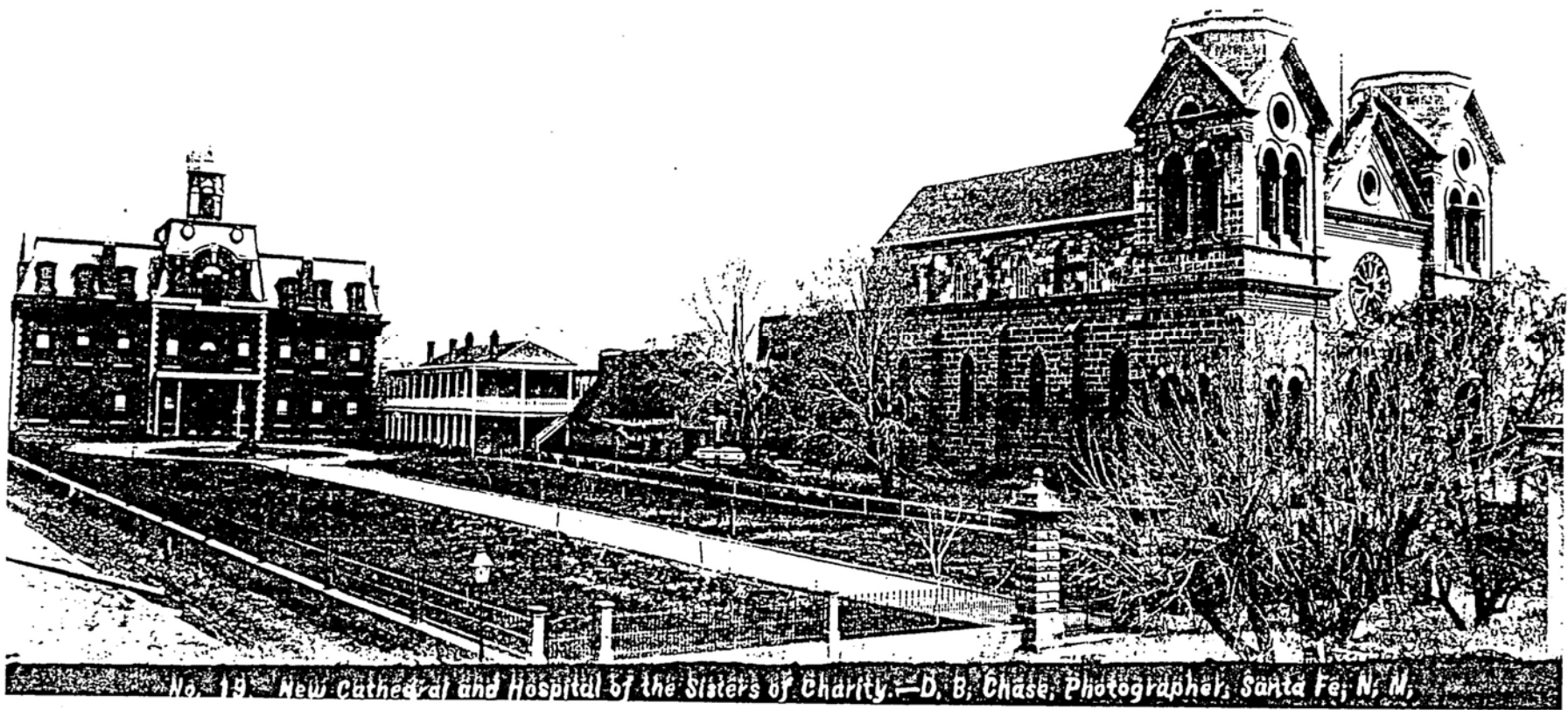
- VIEW TOWARDS E. PALACE GATE -



- ST. FRANCIS - FENCE DETAIL -



- VIEW TO THE SOUTH ALONG PARKING
LOT TOWARDS ST. FRANCIS CATHEDRAL -

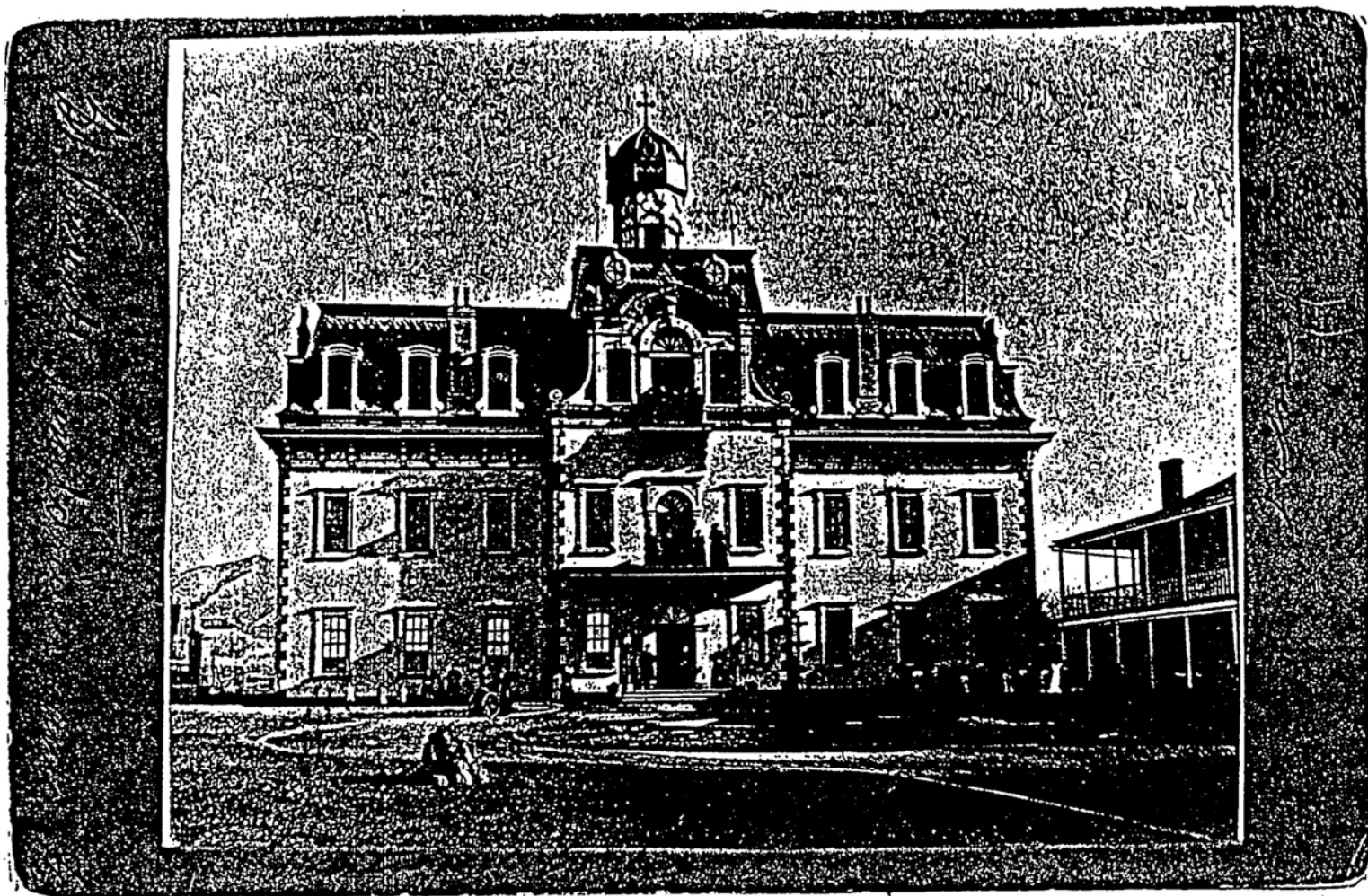


No. 19. New Cathedral and Hospital of the Sisters of Charity.—D. B. Chase, Photographer, Santa Fe, N. M.

1887

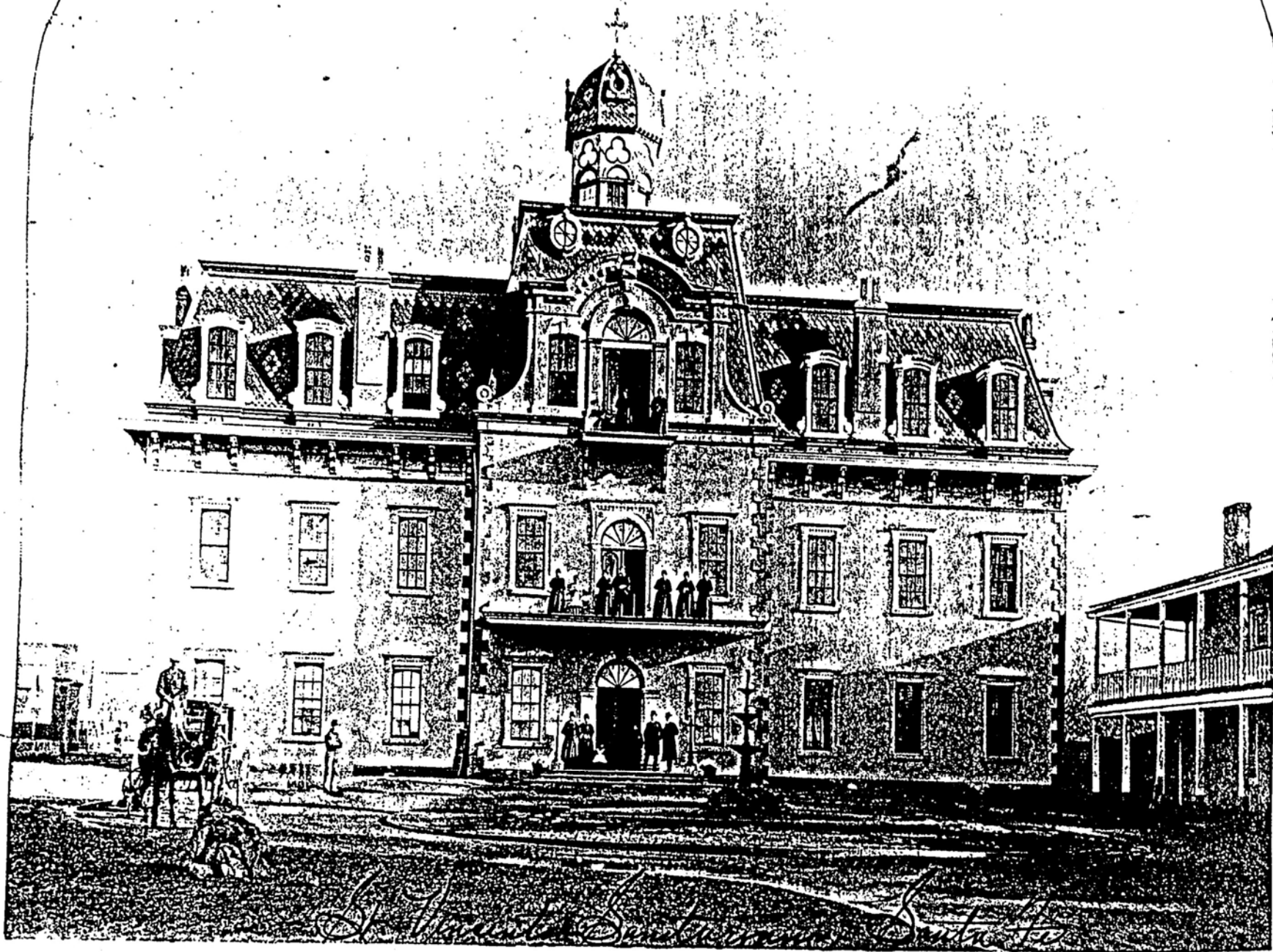
Sancti
Instructionis
Sanctissimi
St. Vincenti Sanitorium /
film

1379



St. Vincent Trade School (Foundation laid June 1878),
Completed June 1881. Later used as a Sanitorium
Burnt down June 12, 1896

(Orig. in Archive)



S. Vincent & Co. Architects Santa Fe

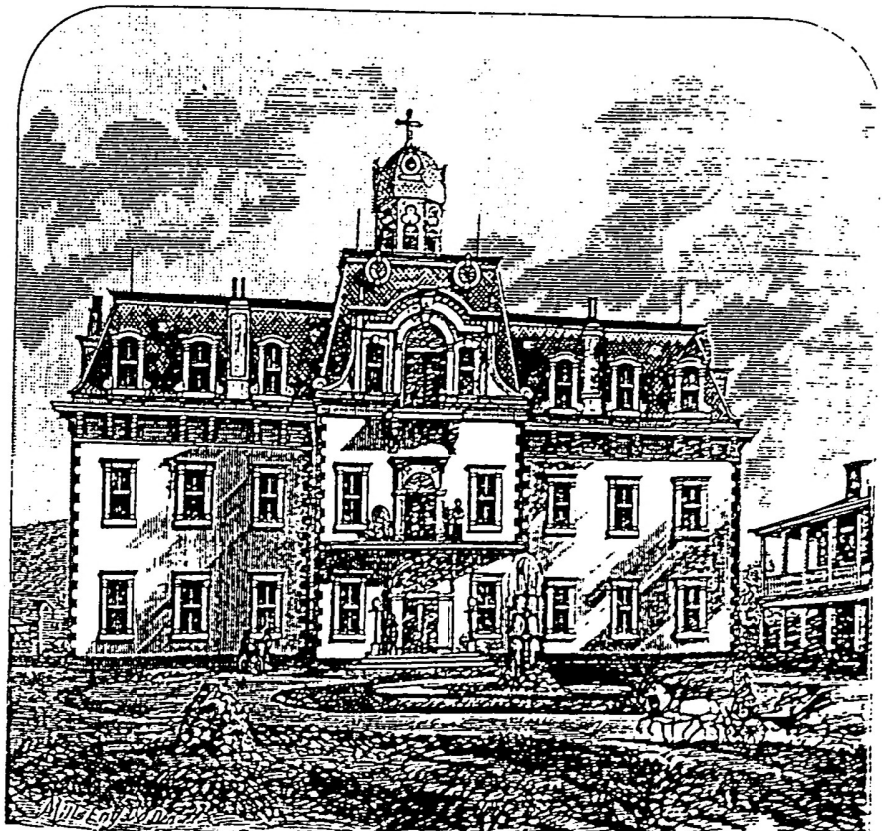
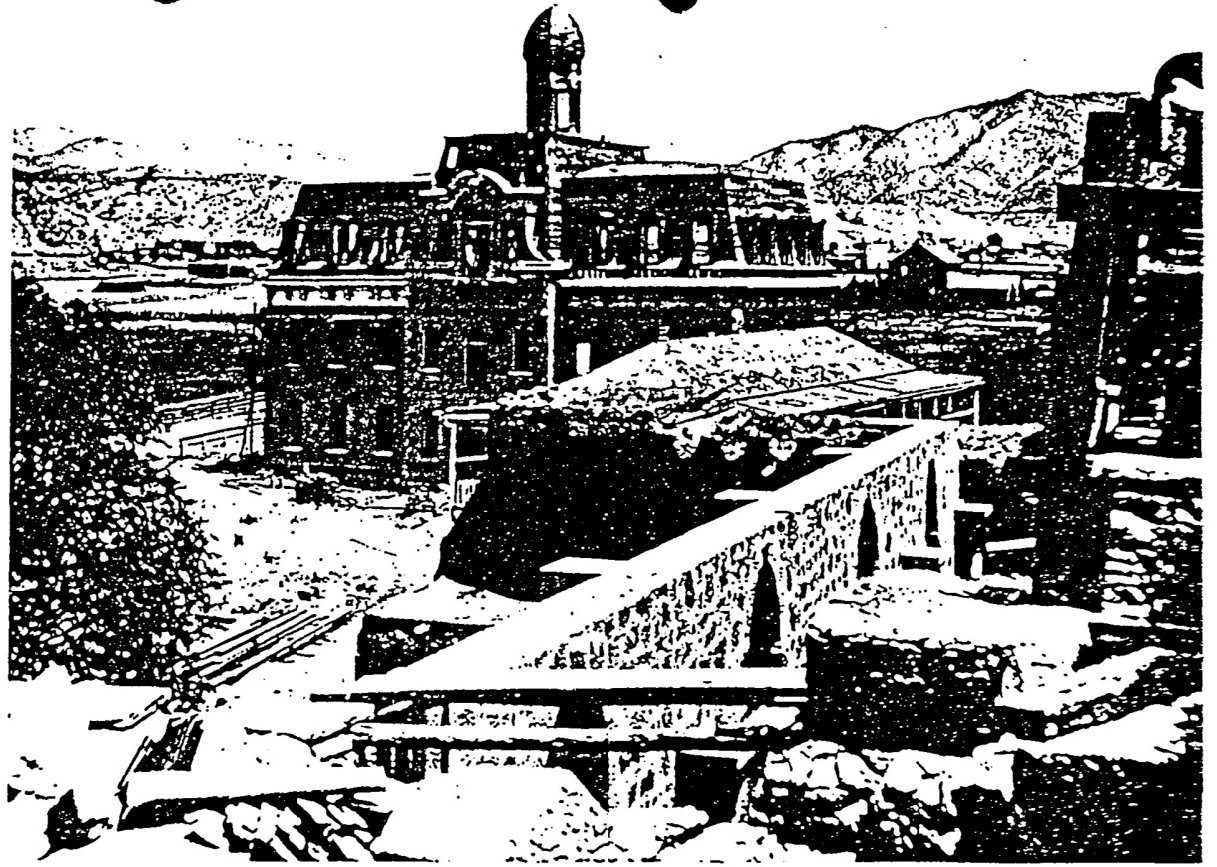
c. 1896



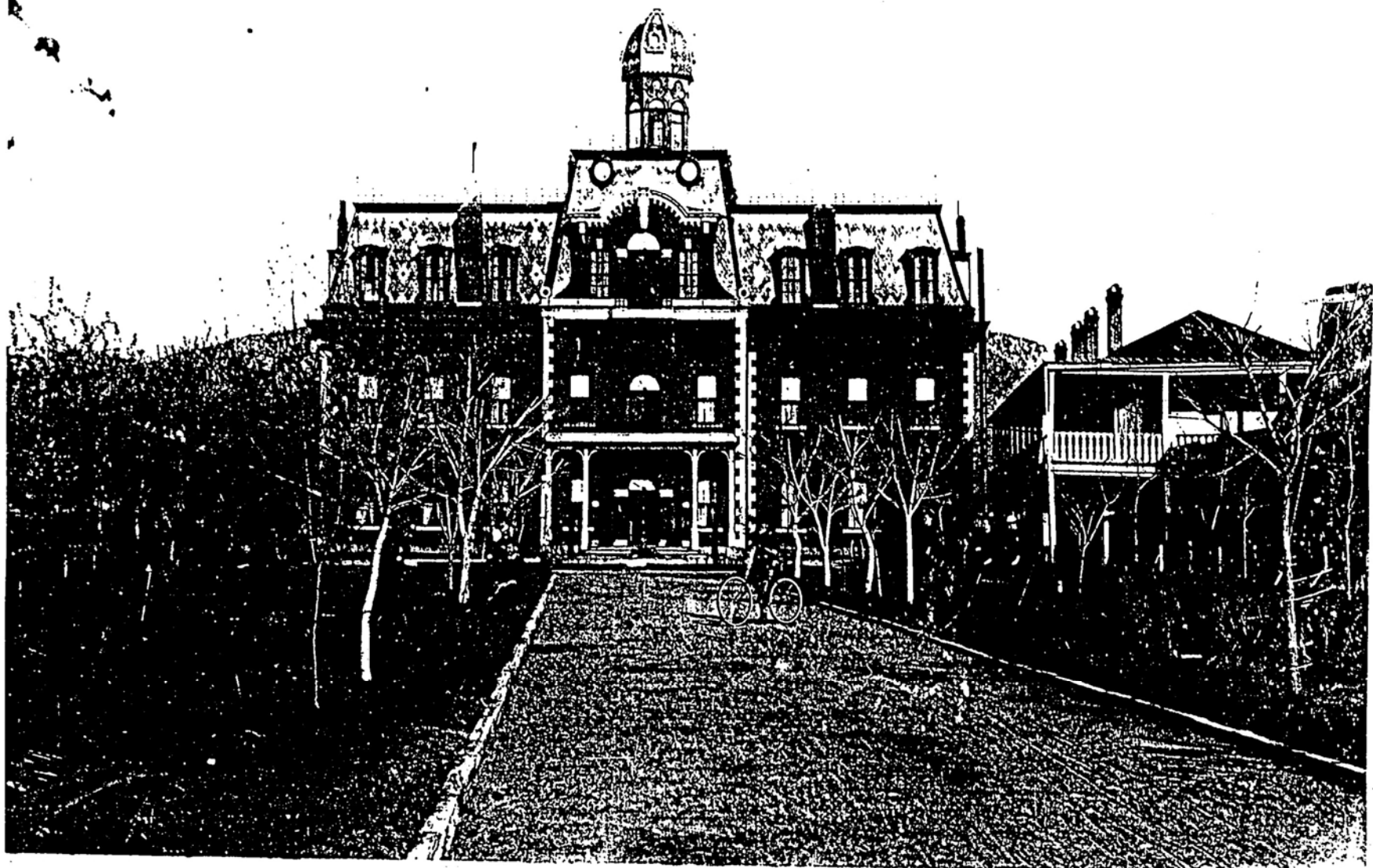
SAINT VINCENT'S HOSPITAL, SANTA FE.

FROM ILLUSTRATED NM SR EO 1885

8741-9

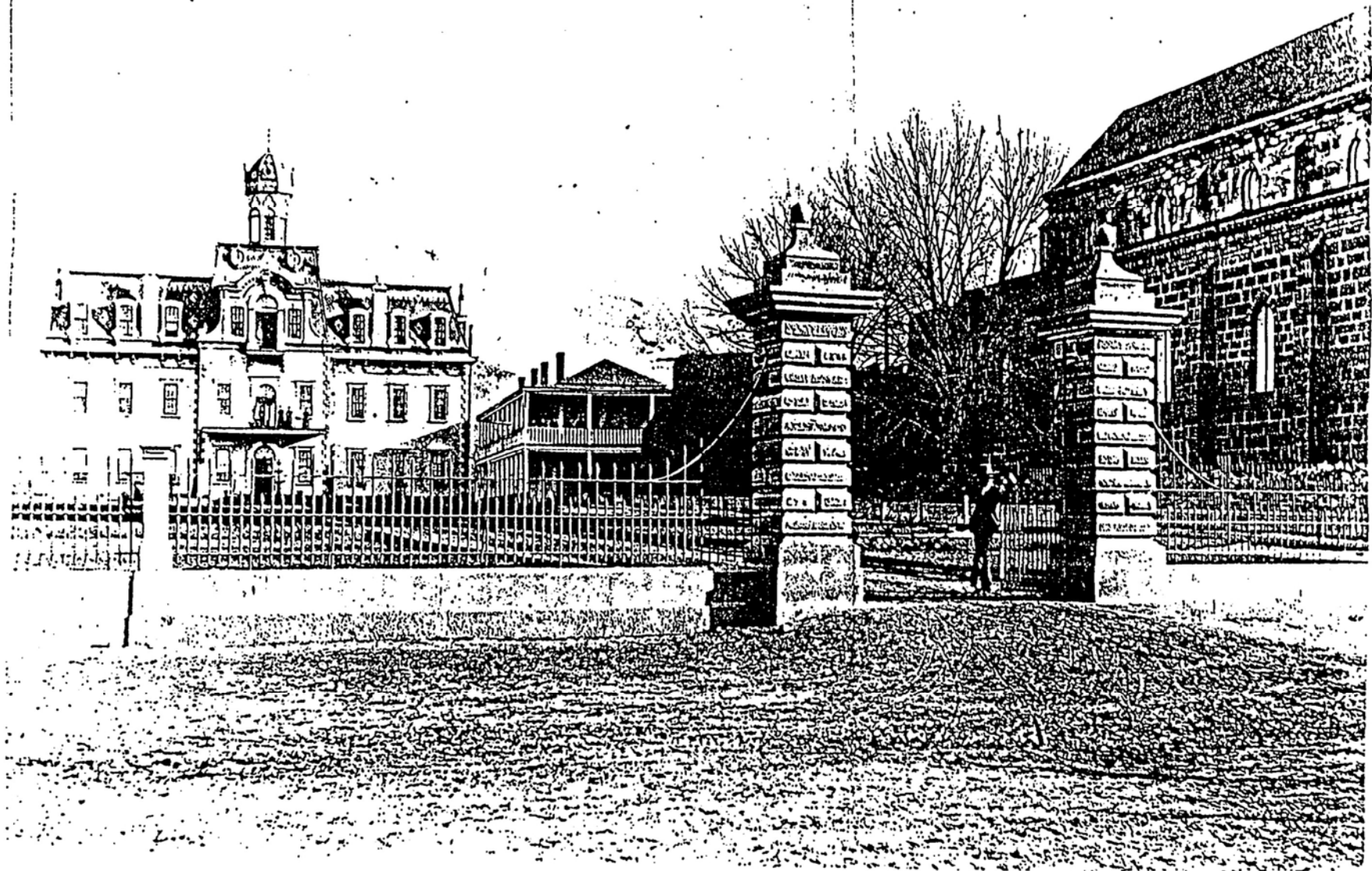


SAINT VINCENT'S HOSPITAL, SANTA FE.



DEC 1896

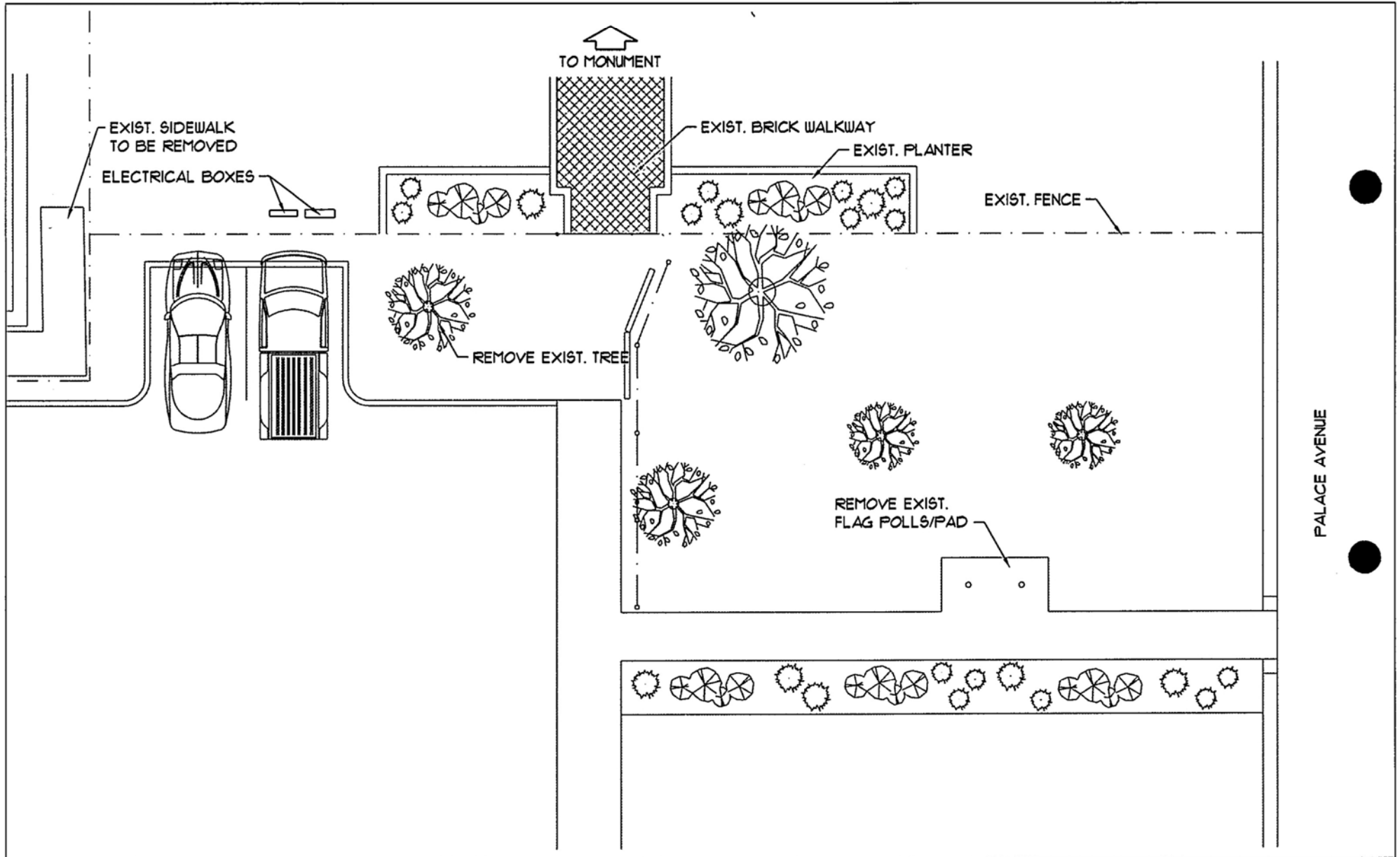
67743





C 1880

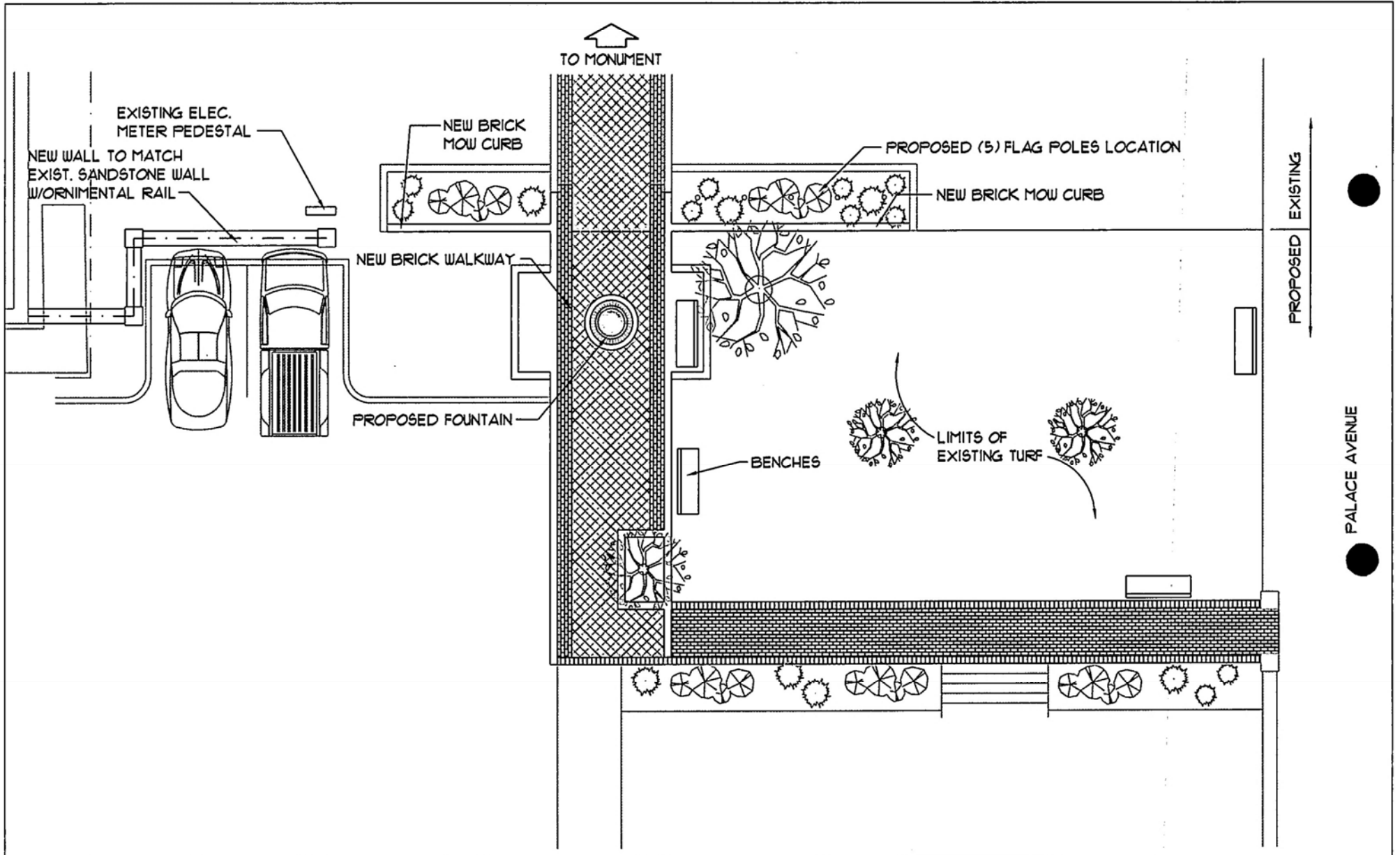
67745



SCALE: 1/8" = 1'-0"

PARTIAL SITE PLAN



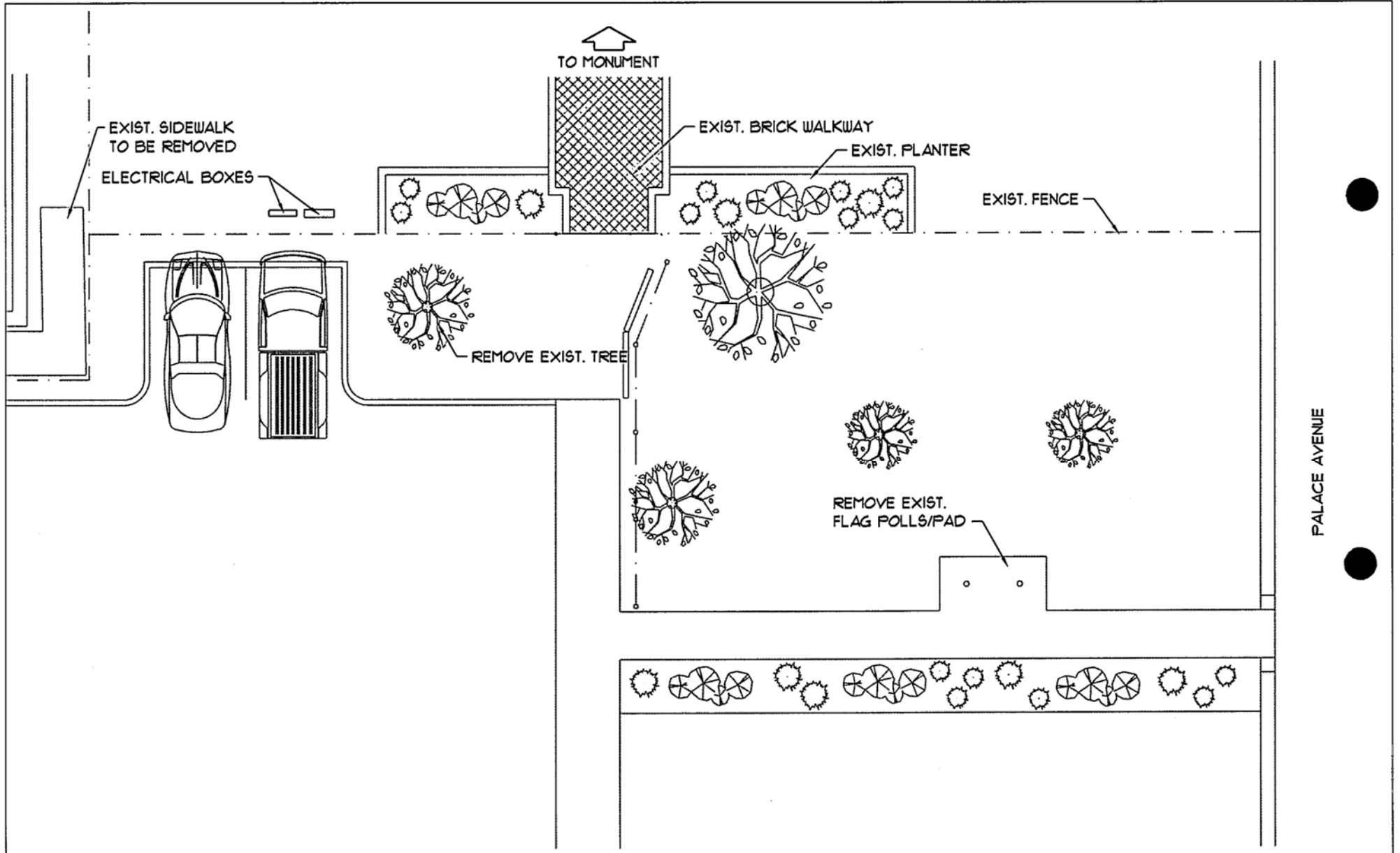


SCALE: 1/8" = 1'-0"

PROPOSED SITE PLAN



11/15/11

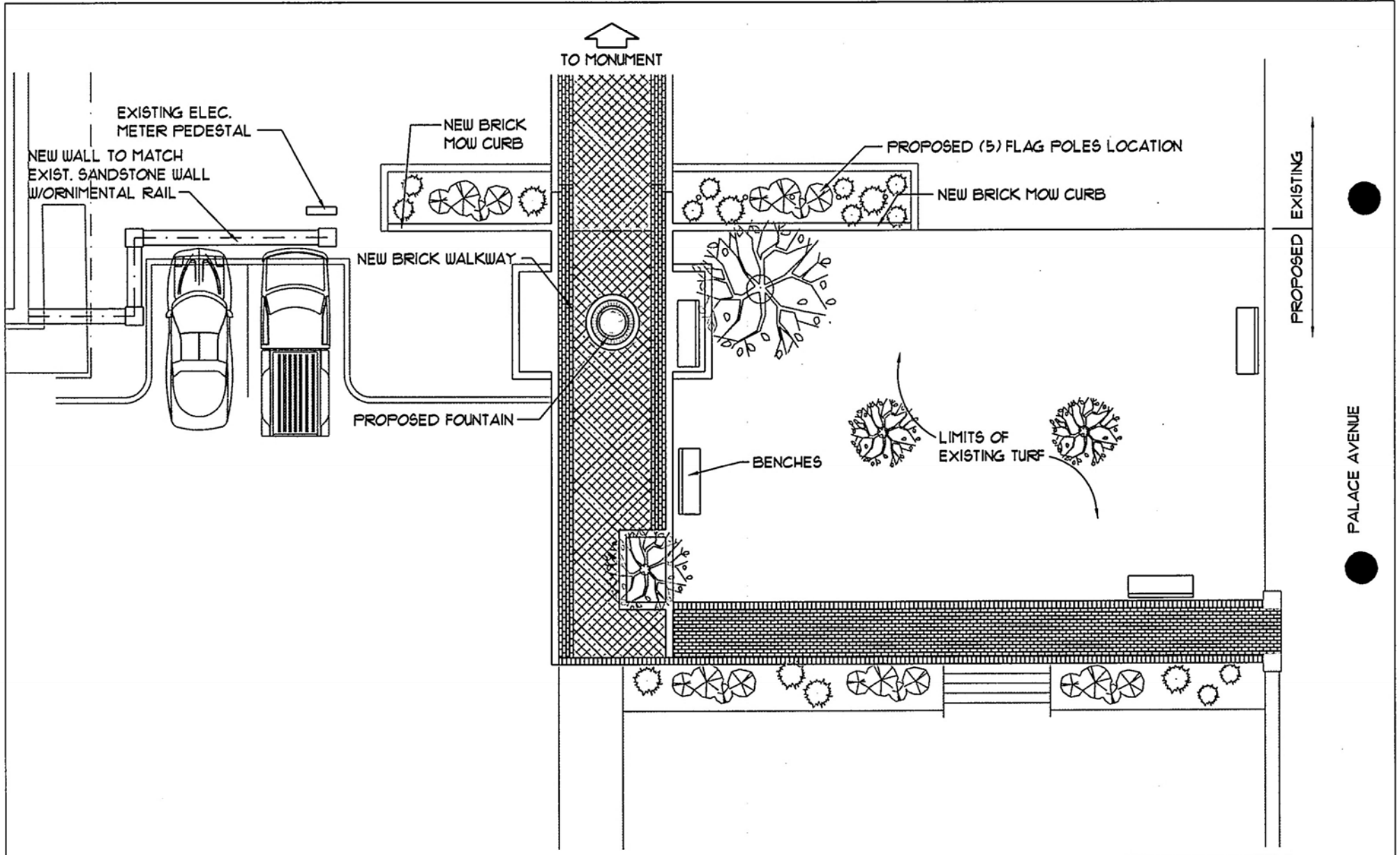


SCALE: 1/8" = 1'-0"

PARTIAL SITE PLAN



100 100 100 100



SCALE: 1/8" = 1'-0"

PROPOSED SITE PLAN

