

# **City of Santa Fe, New Mexico**

## **Education Retirement Board Planning Commission Attachment C**

### **Drawings and Photos**

- 1. Figure 1 – Site Survey**
- 2. Figure 2 – Aerial Photo**
- 3. Figure 3 – Site Development Plan**
- 4. Figure 4 – Adjacent Zoning Map**
- 5. Figure 5 – Installed Bike Rack**
- 6. Figure 6 – Landscape Plan**
- 7. Figure 7 – Photometric Analysis Plan**
- 8. Figure 8 – Installed Light Fixture**
- 9. Figure 9 – Previously Approved Water Plan**
- 10. Figure 10 – Previously Approved Water Budget**
- 11. Figure 11 - Utility Plan**
- 12. Figure 12 – Water Supply**
- 13. Figure 13 – Water Connection**
- 14. Figure 14 – Sewer Connection**
- 15. Figure 15 – Fire Apparatus / Carport Structure**



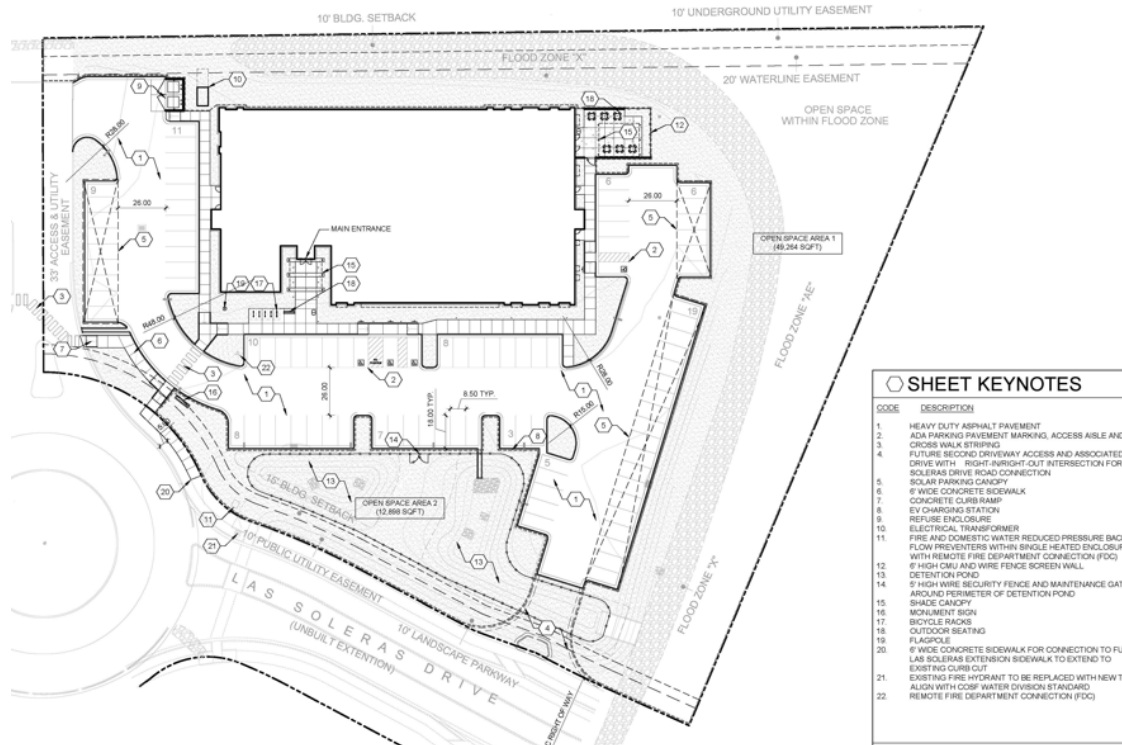


Figure 3 Development Site Plan

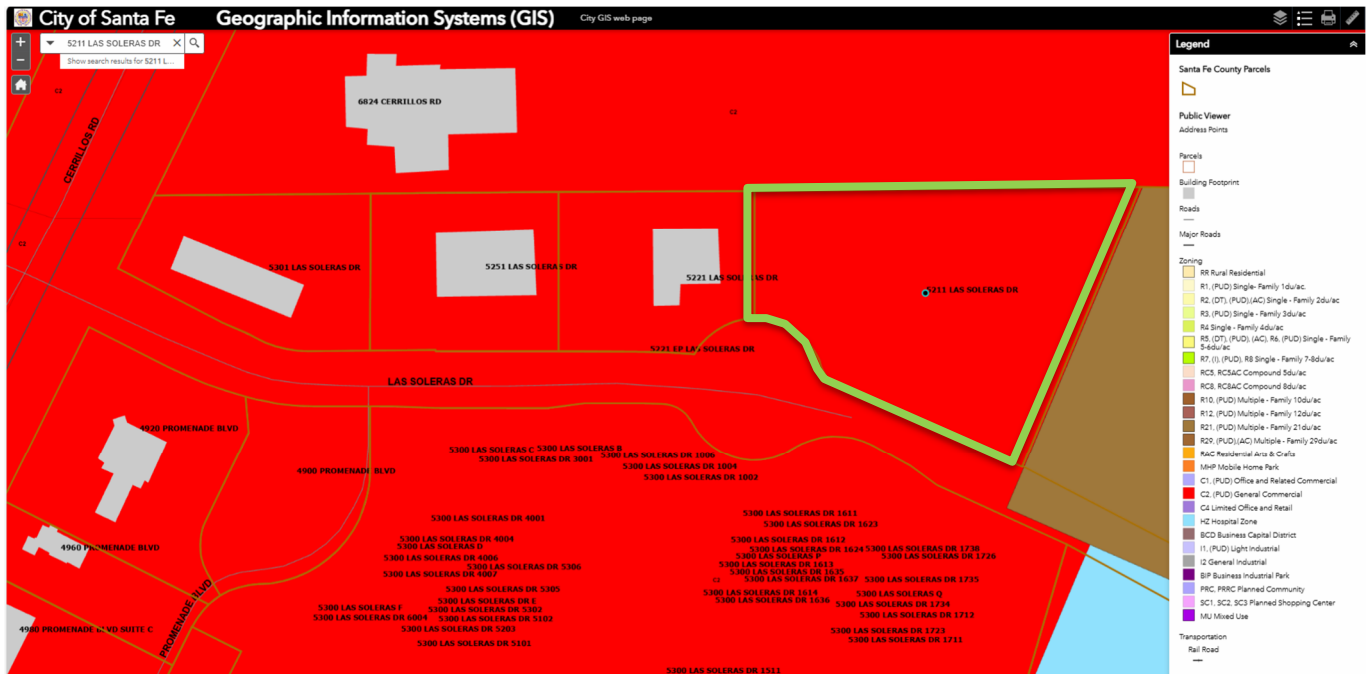


Figure 4 Adjacent Zoning Map





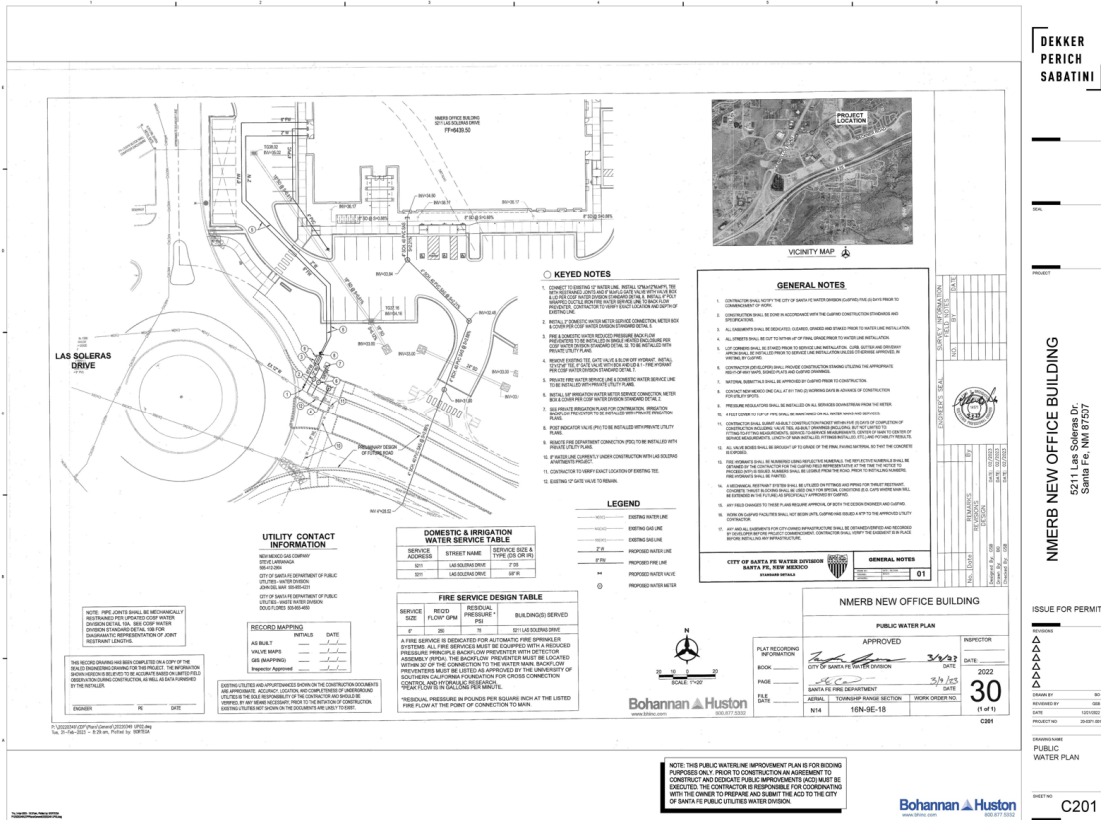


Figure 9 Previously Approved Water Plan

**CITY OF SANTA FE WATER DIVISION  
WATER ASSESSMENT AND WATER BUDGET DESIGNATION CERTIFICATE**

*For City Use Only*

<b>Name of Applicant</b>	David Archuleta	<b>Service Address</b>	5211 Las Soleras	<b>USA Number:</b>	ACDCOM20250004
<b>Contact Phone</b>	505-827-8030	<b>Lot</b>	LOT 7-B1	<b>Confirm</b>	Yes No
<b>Contact Email</b>	David.Archuleta@erb.nm.gov	<b>Project Name</b>	NM ERB Office	<b>Alternative Water Budget</b>	X
<b>Contact Address</b>	701 Camino De Los Marquez	<b>Project Company</b>	NM ERB Office	<b>Water Rights Required for Offset</b>	X
<b>Assessed By</b>	Danny Valenzuela	<b>Project Description</b>	NM ERB Office	<b>Affordable Housing Units</b>	X
<b>Date</b>	2/26/2025	<b>Project Phase (if any)</b>	Single Phase	<b>Paying Water Budget in Full</b>	X

**DEDICATION OF WATER TO MEET WATER OFFSET REQUIREMENT**

1. Pre-Certified Retrofit Credits	Available Retrofit Credits	Retrofit Credits Dedicated to this Permit	Retrofit Credit Balance
Pre-Verification Certificate #	NA	NA	NA
NA	NA	NA	NA

2. Water Bank Sales		Water Budget Calculation			
Total Water Budget	Type of Use	Domestic Demand	NonM	Irrigation 3yr Avg	
Budget Offset Sum Dom + Irr (af)	1.9920	Unit of Measurement	Per 10,000 sqft	Unit of Measurement	1
Budget Vol Less Credits (af)	1.9920	Range sqft (if required)	Dom/IM	Range sqft (if required)	Dom/IM
9.8% Line Contingency Vol (af)	0.1952	Volume Per Unit (afu)	1.3610	Volume Per Unit (afu)	0.631
Threshold	Below	Number of Units	1	Number of Units	1
Final Budget Volume (af)	2.1870	Volume x Units	1.3610	Volume x Units	0.631
Final Budget Fee	\$36,304.20	Offset Volume I (af)	1.3610	Offset Vol III (af)	0.631

3. Water Rights Credit from City Water Bank			
Water Bank Account No.	Water Bank Account Owner	Water Bank Admin Authorization No.	Water Credit Allocated to this Permit (AFY)
NA	NA	NA	NA
NA	NA	NA	NA

\*\*\* PAYMENT REQUIRES SIGNATURE \*\*\*

**Required Offset Fee if Purchasing from City Water Bank:** \$36,304.20      **General Ledger:** 51353.439335

By my signature, I affirm that the information contained on this form is true and correct and may be subject to verification by the City of Santa Fe

**Applicant Signature:** *[Signature]*      **Date:** February 27, 2025

For Water Division Only		For Cashiers Office Only	
<b>Approved:</b> Danny Valenzuela	<b>Date:</b> 2/26/2025	<b>Amount Paid</b>	<b>Date:</b> <b>Custmr. Receipt #</b>

Figure 10 Previously Approved Water Budget

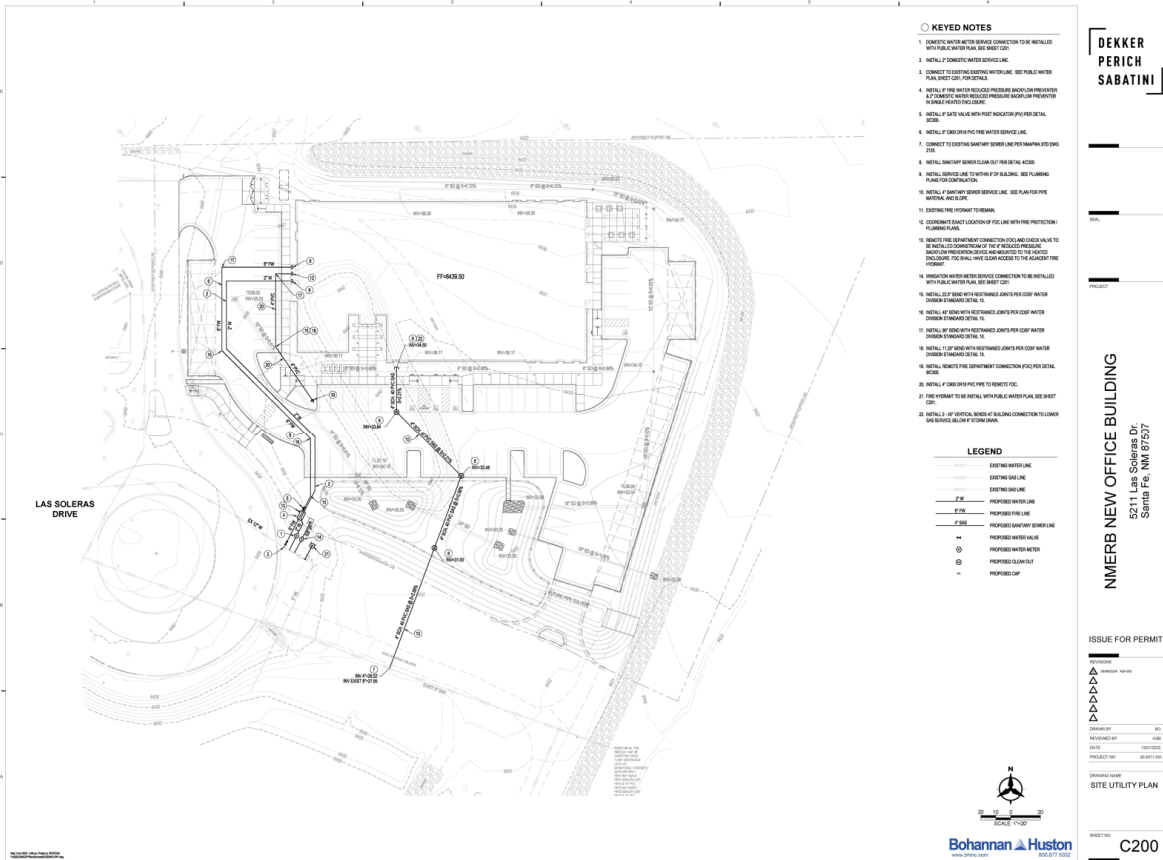


Figure 11 Utility Plan



Figure 12 Water Supply



*Figure 13 Water Connection*



*Figure 14 Sewer Connection*



*Figure 15 Fire Apparatus / Carport Structure*