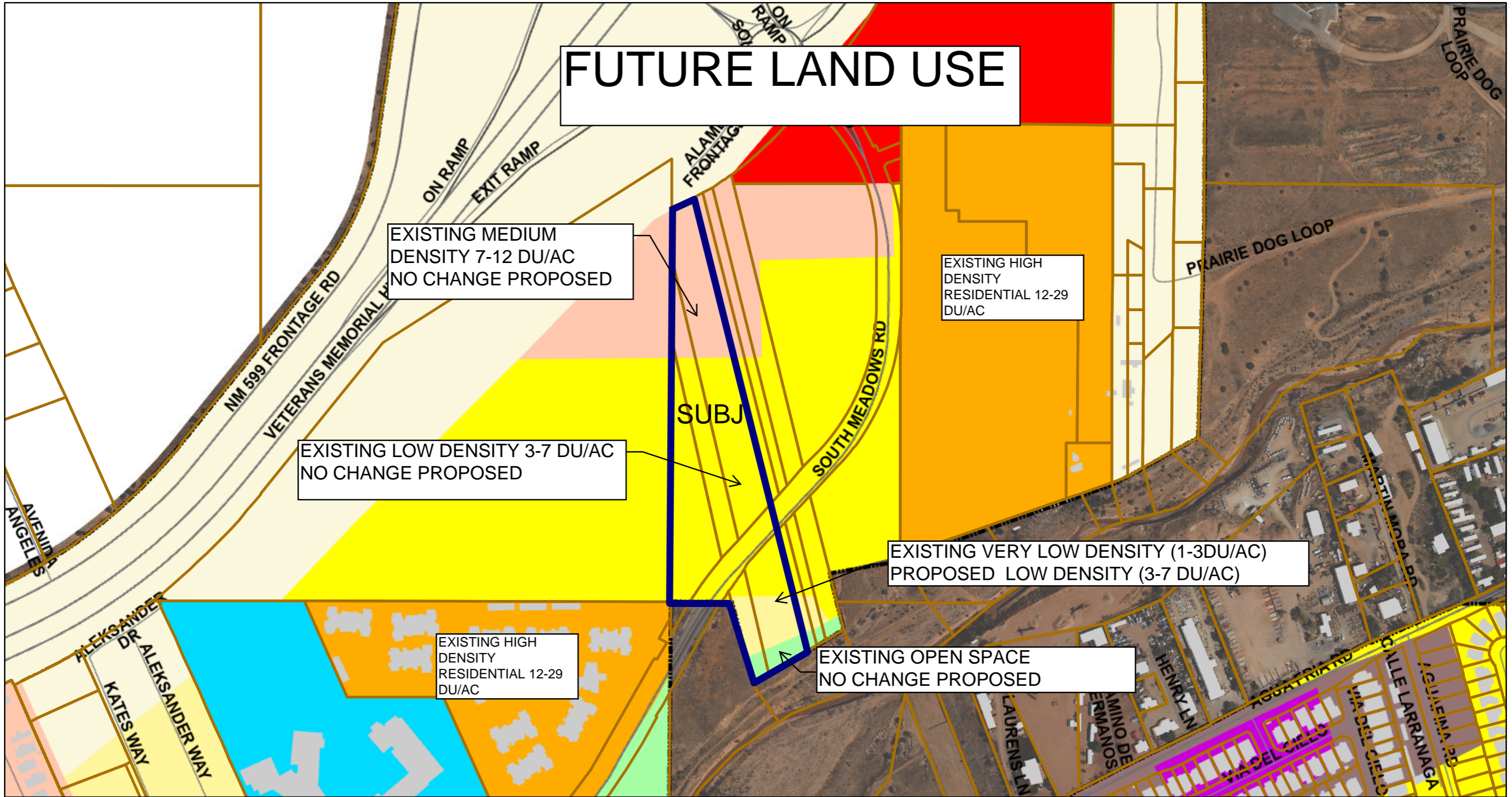


Web AppBuilder for ArcGIS



2/26/2025, 10:55:32 AM

1:4,514

- | | | | |
|-------------------------|--------------------------|------------------------|-------------|
| Santa Fe County Parcels | 7-12 dwellings per acre | Transitional Mixed Use | Major Roads |
| Future Land Use | 12-29 dwellings per acre | Public/Institutional | Roads |
| 1 dwelling per acre | Community Commercial | Open Space | Parcels |
| 1-3 dwellings per acre | Neighborhood Center | Building Footprint | City Limits |
| 3-7 dwellings per acre | | | |

