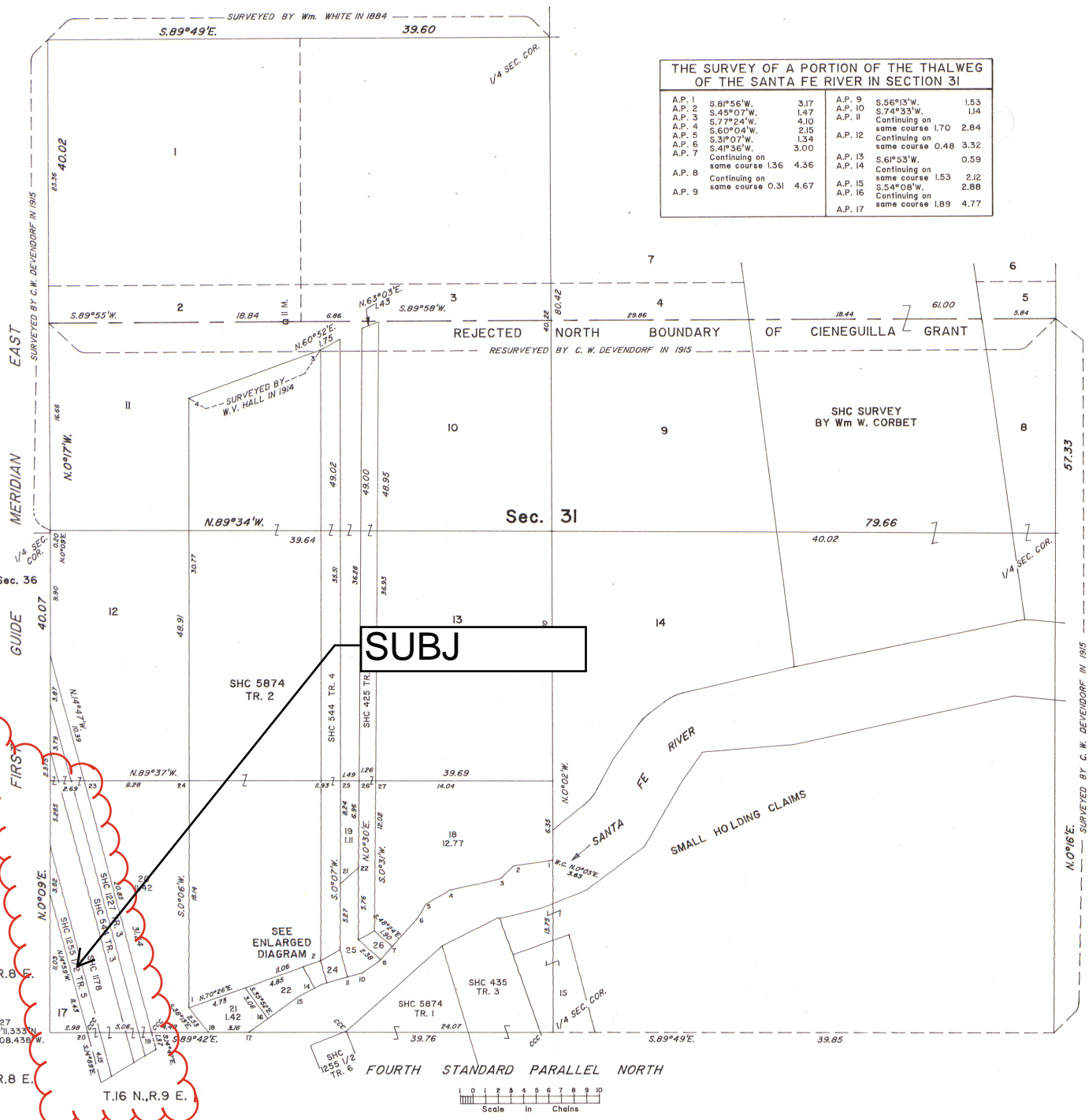
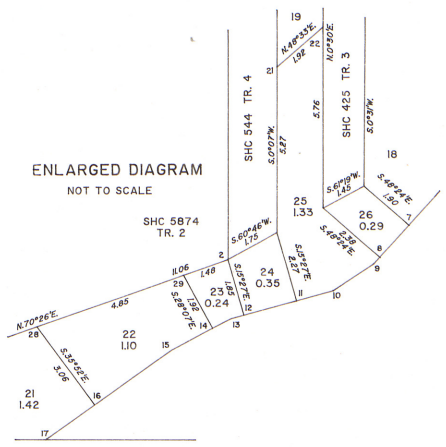


TOWNSHIP 17 NORTH, RANGE 9 EAST, OF THE NEW MEXICO PRINCIPAL MERIDIAN, NEW MEXICO
DEPENDENT RESURVEY AND SUBDIVISION OF SECTION AND SURVEY OF LOTS

THE SURVEY OF A PORTION OF THE THALWEG OF THE SANTA FE RIVER IN SECTION 31

A.P. 1	S.81°56'W.	3.17	A.P. 9	S.56°13'W.	1.53
A.P. 2	S.45°07'W.	1.47	A.P. 10	S.74°33'W.	1.14
A.P. 3	S.77°24'W.	4.10	A.P. 11	Continuing on	
A.P. 4	S.60°04'W.	2.15		some course 1.70	2.84
A.P. 5	S.3°07'W.	1.34	A.P. 12	Continuing on	
A.P. 6	S.4°36'W.	3.00		some course 0.48	3.32
A.P. 7	Continuing on		A.P. 13	S.61°53'W.	0.59
	same course 1.36	4.36	A.P. 14	Continuing on	
A.P. 8	Continuing on			some course 1.53	2.12
	same course 0.31	4.67	A.P. 15	S.54°08'W.	2.88
			A.P. 16	Continuing on	
				some course 1.89	4.77
			A.P. 17		



A history of surveys is contained in the field notes.

This plat represents the dependent resurvey of a portion of the Fourth Standard Parallel North, a portion of the First Guide Meridian East, and certain small holding claim boundaries in section 31, designed to restore the corners in their true original location according to the best available evidence, and the subdivision of section 31, the survey of a portion of the thalweg of the Santa Fe River in section 31, and the survey of certain lot boundaries in section 31, Township 17 North, Range 9 East, New Mexico Principal Meridian, New Mexico.

Except as indicated hereon, the lottings and areas are as shown on the plats approved April 24, 1911 and September 26, 1919.

Survey executed by Thomas A. Maestas, Cadastral Surveyor, beginning January 10, 1984, and completed April 18, 1992, pursuant to Special Instructions dated August 18, 1993, for Group No. 826, New Mexico.

UNITED STATES DEPARTMENT OF THE INTERIOR
BUREAU OF LAND MANAGEMENT

Santa Fe, New Mexico December 2, 1993

This plat is strictly conformable to the approved field notes, and the survey, having been correctly executed in accordance with the requirements of law and the regulations of this Bureau, is hereby accepted.

For the Director

Chief Cadastral Surveyor for New Mexico

RED