

SANTA FE COUNTY PUBLIC NOTICE

THE SANTA FE COUNTY LAND USE ADMINISTRATOR HAS NOT REVIEWED THIS PLAT OF SURVEY BEFORE ITS FILING IN THE OFFICE OF THE COUNTY CLERK. THIS PLAT IS NOT BEING FILED FOR THE PURPOSE OF CREATING A SUBDIVISION OR NEW LOTS, ALTERING THE BOUNDARIES OF ANY EXISTING LOTS OR FOR THE PURPOSE OF "DEVELOPMENT" AS DEFINED IN THE SANTA FE COUNTY LAND DEVELOPMENT CODE, EXTRATERRITORIAL ZONING ORDINANCE OR EXTRATERRITORIAL SUBDIVISION REGULATIONS. THIS STATEMENT DOES NOT IN ANY WAY REPRESENT OFFICAL COUNTY APPROVAL OF THIS PLAT.

LEGEND AND NOTES

- DENOTES POINT TOLER CAP NMPLS#11599 OR AS NOTED
- DENOTES POINT SET THIS SURVEY
- DENOTES POINT CALCULATED
- ⊙ DENOTES BLM OR NMDOT MONUMENT

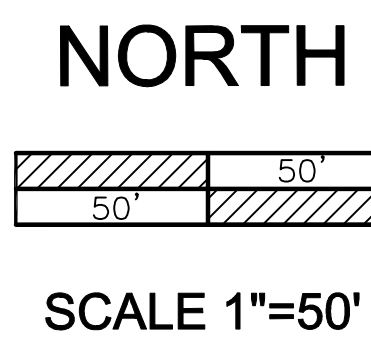
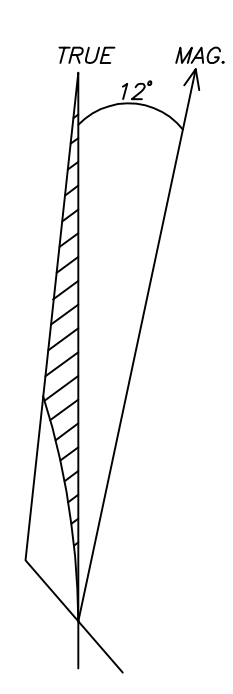
- DENOTES EDGE OF EASEMENT
- DENOTES EDGE OF SOUTH MEADOWS ROW
- x—x— DENOTES FENCE LINE

1. BASIS OF BEARING IS FROM "BOUNDARY SURVEY OF EXTERIOR DATA FOR LOTS AS SHOWN" BY RICHARD A. CHATROOP, NMPLS # 11011 AND FILED IN THE OFFICE OF THE SANTA FE CO. CLERK IN PLAT BK.361, PG.042.
2. DATA IN () IS FROM PLAT REFERENCE#5 WHERE IT DIFFERS FROM DATA SHOWN.
3. THIS PLAT IS SUBJECT TO ANY EASEMENTS, RESTRICTIONS AND COVENANTS OF RECORD.

PLAT REFERENCES

THE FOLLOWING PLATS WERE USED IN THE DETERMINATION OF LOT LINES AND RIGHT-OF-WAYS AND ARE RECORD DOCUMENTS FOR THIS PLAT.

1. "PLAT OF SURVEY FOR RICHARD MONTOYA" BY RICHARD A. CHATROOP NMPLS#11011, AND FILED IN PLAT BOOK 264, PG. 030 ON JAN. 25TH, 1994. OFFICE OF THE COUNTY CLERK SANTA FE COUNTY, NEW MEXICO.
2. "TOWNSHIP 17 NORTH, RANGE 9 EAST, OF THE NEW MEXICO PRINCIPAL MERIDIAN NEW MEXICO DEPENDENT RESURVEY AND SUBDIVISION OF SECTION AND SURVEY OF LOTS" BY THE UNITED STATES DEPARTMENT OF THE INTERIOR BUREAU OF LAND MANAGEMENT SANTA FE, NEW MEXICO ACCEPTED 12/02/1993.
3. "TOWNSHIP 17 NORTH, RANGE 9 EAST, OF THE NEW MEXICO PRINCIPAL MERIDIAN NEW MEXICO DEPENDENT RESURVEY AND SURVEY" BY THE UNITED STATES DEPARTMENT OF THE INTERIOR BUREAU OF LAND MANAGEMENT SANTA FE, NEW MEXICO ACCEPTED 03/20/2007.
4. "SOUTH MEADOWS ROAD EXTENSION PROJECT" SANTA FE COUNTY PUBLIC WORKS DEPARTMENT, BY STEPHEN J. TOLER NMPLS#11599 DATED APRIL, 2007. FILED IN PLAT BOOK 743, PGS. 24 & 25 SANTA FE COUNTY CLERKS OFFICE.
5. "BOUNDARY SURVEY OF GOVERNMENT LOT 17" BY RICHARD A. CHATROOP NMPLS#11011, AND FILED IN PLAT BOOK 745, PG. 023 IN THE OFFICE OF THE COUNTY CLERK SANTA FE COUNTY, NEW MEXICO.
6. "NEW MEXICO STATE HIGHWAY DEPARTMENT RIGHT OF WAY MAP NEW MEXICO PROJECT NO. ST-7649(203)-2 SANTA FE COUNTY", BY THOMAS G. KLINGENHAGEN NMPLS#5978.



STATE OF NEW MEXICO
 PLAT BOOK 789, PG.40
 UPC#104809474052

N/F THE RODRIGUEZ TRUST
 DOC.#2014602
 UPC#1049097028060

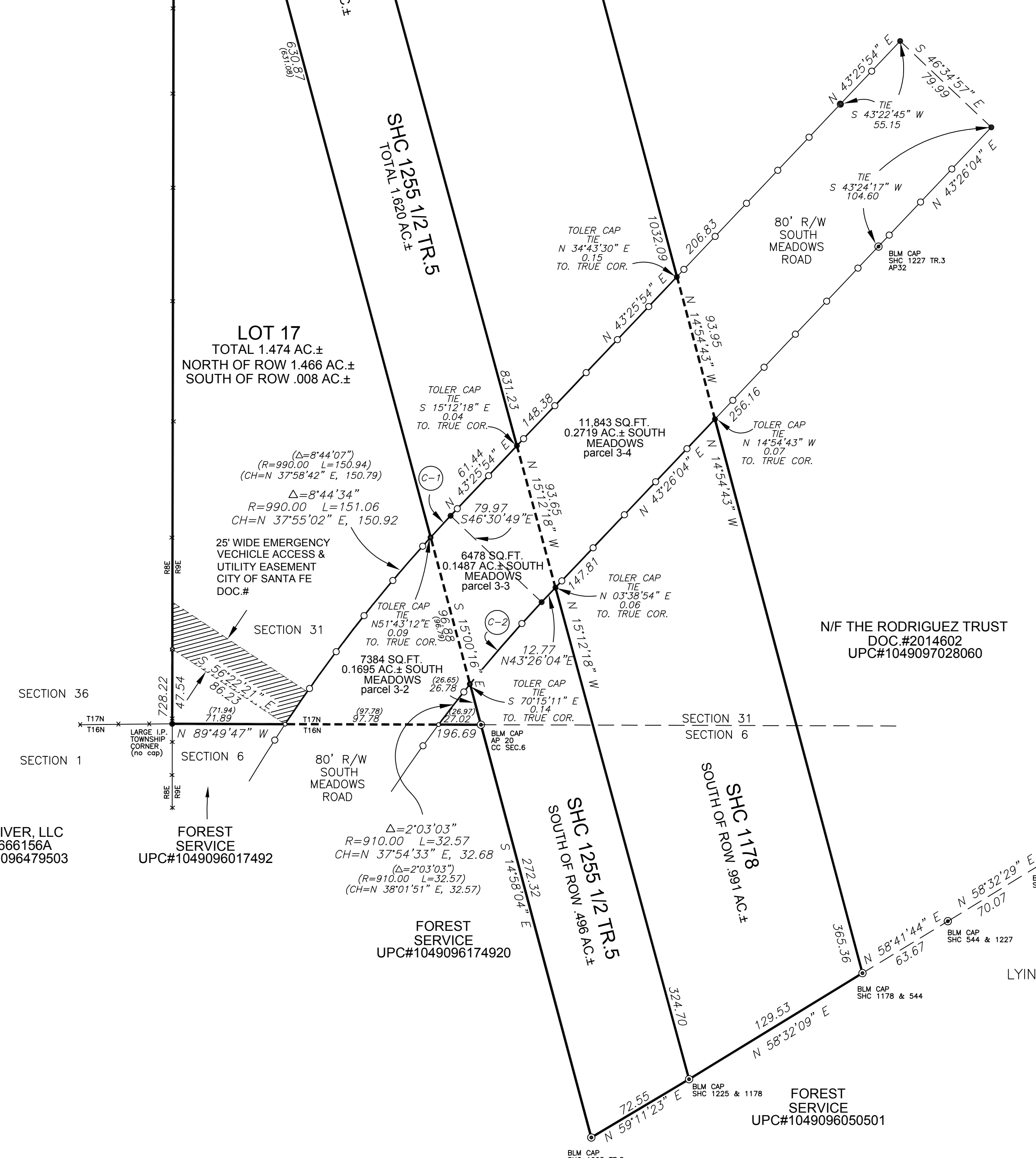
RICHARD A. CHATROOP N.M.P.L.S.#11011

SURVEYORS CERTIFICATE

I HEREBY CERTIFY THAT THIS PLAT AND THE NOTES HEREON ARE AN ACCURATE DELINEATION OF A FIELD SURVEY COMPLETED BY ME OR UNDER MY DIRECTION ON JULY 18TH, 2024, AND ARE TRUE AND CORRECT TO THE BEST OF MY KNOWLEDGE AND BELIEF, AND MEET THE STANDARDS FOR PROFESSIONAL LAND SURVEYORS PRACTICING IN NEW MEXICO.

SOUTH MEADOWS ROW INFO

CURVE	ARC	RADIUS	CHORD	LENGTH	DELTA
C1	18.74	990.00	N42°49'51"E	18.74	1°05'04"
C2	69.42	910.00	N41°07'23"E	69.40	4°22'15"



COUNTY OF SANTA FE)SS
 STATE OF NEW MEXICO)
 I hereby certify that this instrument was filed for record on the _____ day of _____ A.D. 20_____, at _____ o'clock _____ m. and was duly recorded in book _____ of the records of _____ Santa Fe County.

Witness my Hand and Seal of Office
 Katharine Clark
 County Clerk, Santa Fe County, N.M.
 _____ Deputy

BOUNDARY SURVEY OF REMAINING PORTIONS OF
**GOVERNMENT LOT 17,
 SHC 1255 1/2 TR.5 &
 SHC 1178**

LYING WITHIN SECTION 31, T17N, R9E, & SEC.6, T16N, R9E, N.M.P.M. SANTA FE COUNTY, NEW MEXICO.

RICK CHATROOP
 PROFESSIONAL LAND SURVEYOR
 NEW MEXICO REGISTRATION NO. 11011
 (505) 470-0037 110 WAGON TRAIL RD. CERRILLOS, NM. 87010

INDEXING INFORMATION FOR THE COUNTY CLERK
 OWNER: MONTOYA Y GARCIA, LLC UPC#1049097015040-SHC 1255 1/2 TR5
 UPC#1049097021053-SHC 1178, UPC#1049097006028-L17
 LOCATION: LYING WITHIN SECTION 31, T17N, R9E, & SEC.6, T16N, R9E, N.M.P.M. SANTA FE COUNTY, NEW MEXICO.

STORM RIVER, LLC
 DOC.#1666156A
 UPC#1048096479503

FOREST SERVICE
 UPC#1049096017492

FOREST SERVICE
 UPC#1049096174920

N/F THE RODRIGUEZ TRUST
 DOC.#2014602
 UPC#1049097028060

FOREST SERVICE
 UPC#1049096050501