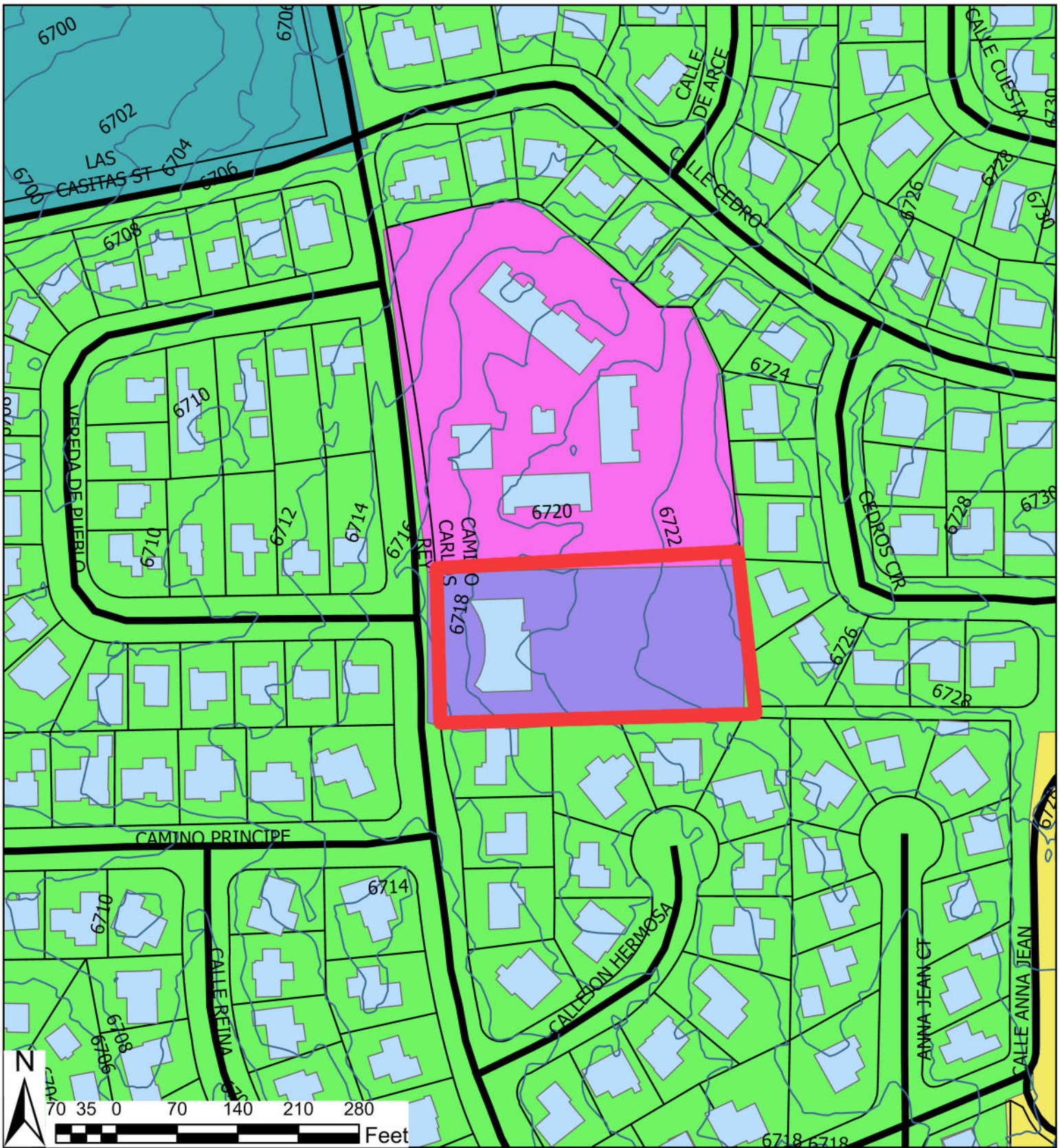


City of Santa Fe, New Mexico

Board of Adjustment Attachment C

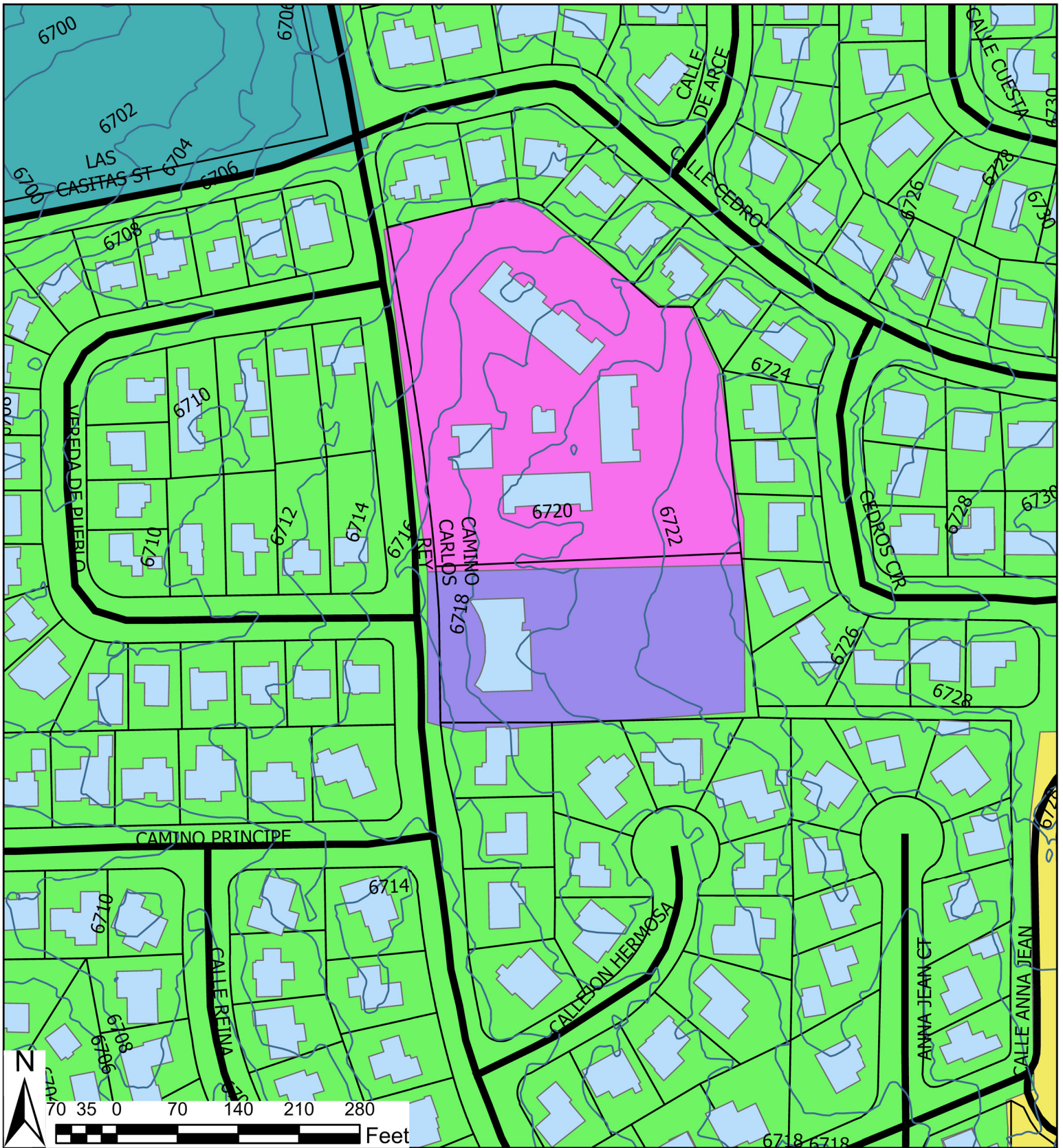
Maps and Photos

- 1. Future Land Use Zoning**
- 2. Current Zoning**
- 3. Aerial View**
- 4. Street View Property Entrance**



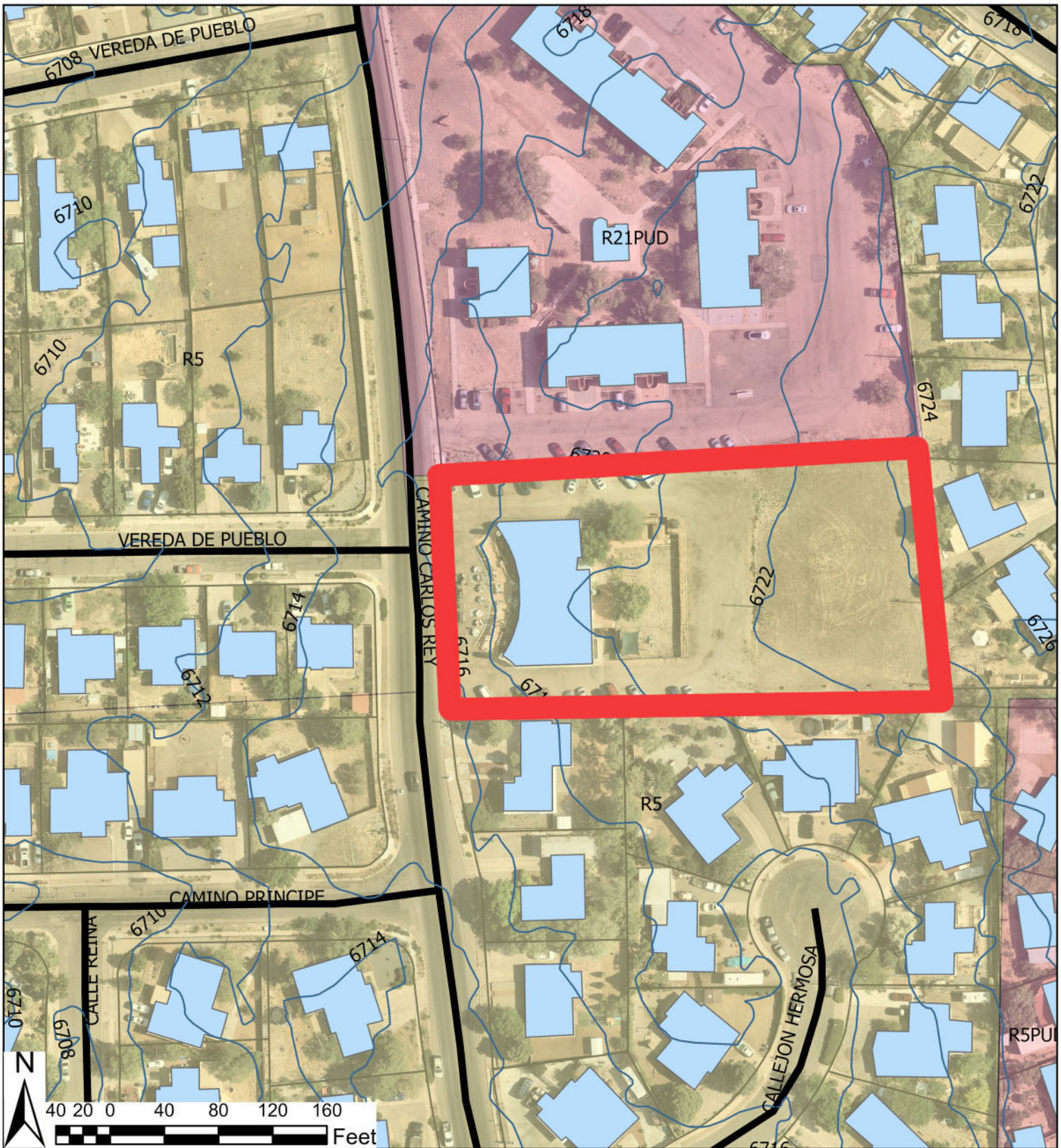
Future Land Use Legend

- | | | |
|---------------------|-------------------------------|-------------------------|
| 2ftContours | ResidentialBuildingFootp | 7-12 dwellings per acre |
| RoadsCenterlineCity | 12-29 dwellings per acre | Park |
| RoadsCityMajor | 3-7 dwellings per acre | Public/Institutional |
| ParcelsCity | Site - 2247 Camino Carlos Rey | |



Future Land Use Legend

- 2ftContours
- RoadsCenterlineCity
- RoadsCityMajor
- ParcelsCity
- ResidentialBuildingFootp
- 12-29 dwellings per acre
- 3-7 dwellings per acre
- 7-12 dwellings per acre
- Park
- Public/Institutional



Current Zoning Map Legend

- | | | |
|---------------------|-------------------------------|--------|
| 2ftContours | ResidentialBuilding | R21PUD |
| RoadsCenterlineCity | Site - 2247 Camino Carlos Rey | R5 |
| RoadsCityMajor | | R5PUD |
| ParcelsCity | | |



Current Aerial Photo Legend

- 2ftContours
- RoadsCenterlineCity
- RoadsCityMajor
- ParcelsCity
- ResidentialBuilding

