



SEAL

PROJECT

**NMERB NEW OFFICE BUILDING**  
5211 Las Soleras Dr.  
Santa Fe, NM 87507

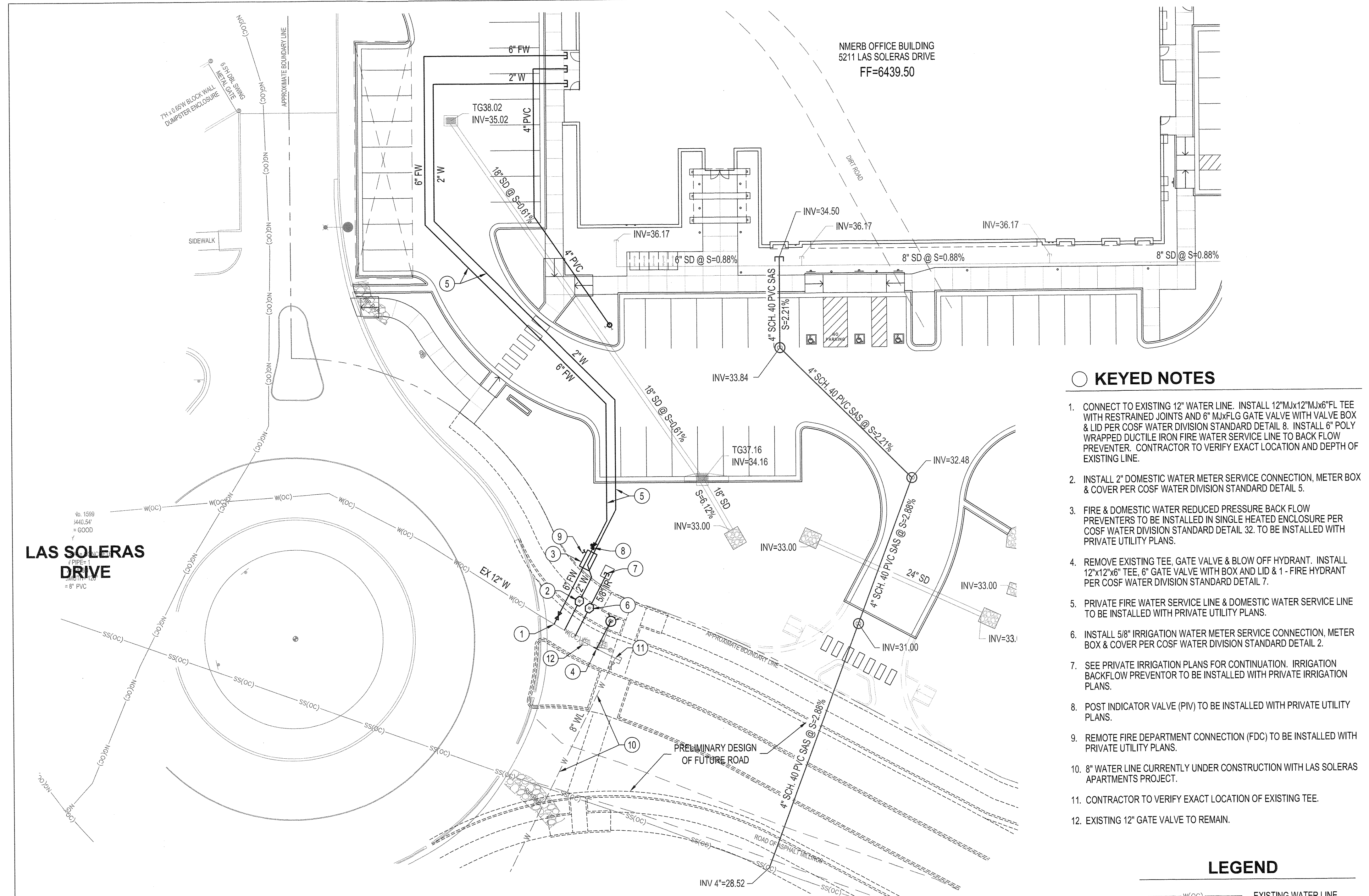
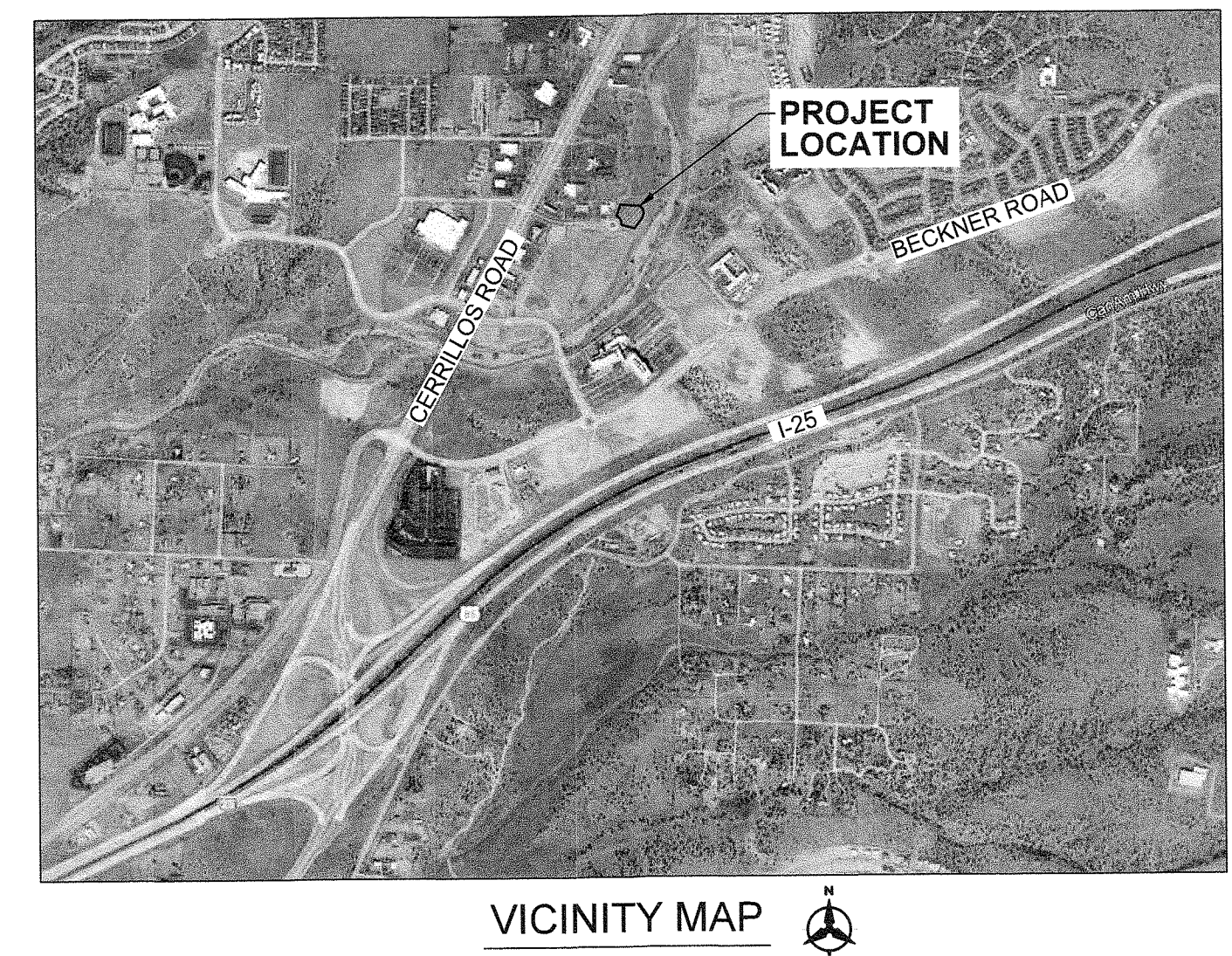
ISSUE FOR PERMIT

REVISIONS  
 ▲  
 ▲  
 ▲  
 ▲  
 ▲

DRAWN BY BO  
 REVIEWED BY GSB  
 DATE 12/21/2022  
 PROJECT NO 20-0371.001

DRAWING NAME  
**PUBLIC WATER PLAN**

SHEET NO  
**C201**



**KEYED NOTES**

- CONNECT TO EXISTING 12" WATER LINE. INSTALL 12" M.I. 12" W.I. 6" FL TEE WITH RESTRAINED JOINTS AND 6" M.I. 6" GATE VALVE WITH VALVE BOX & LID PER COSFW WATER DIVISION STANDARD DETAIL 8. INSTALL 6" POLY WRAPPED DUCTILE IRON FIRE WATER SERVICE LINE TO BACK FLOW PREVENTER. CONTRACTOR TO VERIFY EXACT LOCATION AND DEPTH OF EXISTING LINE.
- INSTALL 2" DOMESTIC WATER METER SERVICE CONNECTION, METER BOX & COVER PER COSFW WATER DIVISION STANDARD DETAIL 5.
- FIRE & DOMESTIC WATER REDUCED PRESSURE BACK FLOW PREVENTERS TO BE INSTALLED IN SINGLE HEATED ENCLOSURE PER COSFW WATER DIVISION STANDARD DETAIL 32. TO BE INSTALLED WITH PRIVATE UTILITY PLANS.
- REMOVE EXISTING TEE, GATE VALVE & BLOW OFF HYDRANT. INSTALL 12"x12"x6" TEE, 6" GATE VALVE WITH BOX AND LID & 1" FIRE HYDRANT PER COSFW WATER DIVISION STANDARD DETAIL 7.
- PRIVATE FIRE WATER SERVICE LINE & DOMESTIC WATER SERVICE LINE TO BE INSTALLED WITH PRIVATE UTILITY PLANS.
- INSTALL 5/8" IRRIGATION WATER METER SERVICE CONNECTION, METER BOX & COVER PER COSFW WATER DIVISION STANDARD DETAIL 2.
- SEE PRIVATE IRRIGATION PLANS FOR CONTINUATION, IRRIGATION BACKFLOW PREVENTOR TO BE INSTALLED WITH PRIVATE IRRIGATION PLANS.
- POST INDICATOR VALVE (PIV) TO BE INSTALLED WITH PRIVATE UTILITY PLANS.
- REMOTE FIRE DEPARTMENT CONNECTION (FDC) TO BE INSTALLED WITH PRIVATE UTILITY PLANS.
- 8" WATER LINE CURRENTLY UNDER CONSTRUCTION WITH LAS SOLERAS APARTMENTS PROJECT.
- CONTRACTOR TO VERIFY EXACT LOCATION OF EXISTING TEE.
- EXISTING 12" GATE VALVE TO REMAIN.

**LEGEND**

- W(OC) — EXISTING WATER LINE
- G(OC) — EXISTING GAS LINE
- S(OC) — EXISTING SAS LINE
- 2" W PROPOSED WATER LINE
- 6" FW PROPOSED FIRE LINE
- ⊕ PROPOSED WATER VALVE
- ⊙ PROPOSED WATER METER

**GENERAL NOTES**

- CONTRACTOR SHALL NOTIFY THE CITY OF SANTA FE WATER DIVISION (CoSFWD) FIVE (5) DAYS PRIOR TO COMMENCEMENT OF WORK.
- CONSTRUCTION SHALL BE DONE IN ACCORDANCE WITH THE CoSFWD CONSTRUCTION STANDARDS AND SPECIFICATIONS.
- ALL EASEMENTS SHALL BE DEDICATED, CLEARED, GRADED AND STAKED PRIOR TO WATER LINE INSTALLATION.
- ALL STREETS SHALL BE CUT TO WITHIN 48" OF FINAL GRADE PRIOR TO WATER LINE INSTALLATION.
- LOT CORNERS SHALL BE STAKED PRIOR TO SERVICE LINE INSTALLATION. CURB, GUTTER AND DRIVEWAY APRON SHALL BE INSTALLED PRIOR TO SERVICE LINE INSTALLATION UNLESS OTHERWISE APPROVED, IN WRITING, BY CoSFWD.
- CONTRACTOR (DEVELOPER) SHALL PROVIDE CONSTRUCTION STAKING UTILIZING THE APPROPRIATE RIGHT-OF-WAY MAPS, SIGNED PLATS AND CoSFWD DRAWINGS.
- MATERIAL SUBMITTALS SHALL BE APPROVED BY CoSFWD PRIOR TO CONSTRUCTION.
- CONTACT NEW MEXICO ONE CALL AT 811 TWO (2) WORKING DAYS IN ADVANCE OF CONSTRUCTION FOR UTILITY SPOTS.
- PRESSURE REGULATORS SHALL BE INSTALLED ON ALL SERVICES DOWNSTREAM FROM THE METER.
- 4 FEET COVER TO TOP OF PIPE SHALL BE MAINTAINED ON ALL WATER MAINS AND SERVICES.
- CONTRACTOR SHALL SUBMIT AS-BUILT CONSTRUCTION PACKET WITHIN FIVE (5) DAYS OF COMPLETION OF CONSTRUCTION INCLUDING: VALVE TIES, AS-BUILT DRAWINGS (INCLUDING, BUT NOT LIMITED TO, FITTING-TO-FITTING MEASUREMENTS, SERVICE-TO-SERVICE MEASUREMENTS, CENTER OF MAIN TO CENTER OF SERVICE MEASUREMENTS, LENGTH OF MAIN INSTALLED, FITTINGS INSTALLED, ETC.) AND POTABILITY RESULTS.
- ALL VALVE BOXES SHALL BE BROUGHT UP TO GRADE OF THE FINAL PAVING MATERIAL SO THAT THE CONCRETE IS EXPOSED.
- FIRE HYDRANTS SHALL BE NUMBERED USING REFLECTIVE NUMERALS. THE REFLECTIVE NUMERALS SHALL BE OBTAINED BY THE CONTRACTOR FOR THE CoSFWD FIELD REPRESENTATIVE AT THE TIME THE NOTICE TO PROCEED (NTP) IS ISSUED. NUMBERS SHALL BE LEGIBLE FROM THE ROAD. PRIOR TO INSTALLING NUMBERS, FIRE HYDRANTS SHALL BE PAINTED.
- A MECHANICAL RESTRAINT SYSTEM SHALL BE UTILIZED ON FITTINGS AND PIPING FOR THRUST RESTRAINT. CONCRETE THRUST BLOCKING SHALL BE USED ONLY FOR SPECIAL CONDITIONS (E.G. CAPS WHERE MAIN WILL BE EXTENDED IN THE FUTURE) AS SPECIFICALLY APPROVED BY CoSFWD.
- ANY FIELD CHANGES TO THESE PLANS REQUIRE APPROVAL OF BOTH THE DESIGN ENGINEER AND CoSFWD.
- WORK ON CoSFWD FACILITIES SHALL NOT BEGIN UNTIL CoSFWD HAS ISSUED A NTP TO THE APPROVED UTILITY CONTRACTOR.
- ANY AND ALL EASEMENTS FOR CITY-OWNED INFRASTRUCTURE SHALL BE OBTAINED/VERIFIED AND RECORDED BY DEVELOPER BEFORE PROJECT COMMENCEMENT. CONTRACTOR SHALL VERIFY THE EASEMENT IS IN PLACE BEFORE INSTALLING ANY INFRASTRUCTURE.

**CITY OF SANTA FE WATER DIVISION**  
SANTA FE, NEW MEXICO

**GENERAL NOTES**  
 SHEET NO. 01

**UTILITY CONTACT INFORMATION**

NEW MEXICO GAS COMPANY  
 STEVE LARRANAGA  
 505-412-2904

CITY OF SANTA FE DEPARTMENT OF PUBLIC UTILITIES - WATER DIVISION  
 JOHN DEL MAR 505-955-4231

CITY OF SANTA FE DEPARTMENT OF PUBLIC UTILITIES - WASTE WATER DIVISION  
 DOUG FLORES 505-955-4650

**DOMESTIC & IRRIGATION WATER SERVICE TABLE**

SERVICE ADDRESS	STREET NAME	SERVICE SIZE & TYPE (DS OR IR)
5211	LAS SOLERAS DRIVE	2" DS
5211	LAS SOLERAS DRIVE	5/8" IR

**FIRE SERVICE DESIGN TABLE**

SERVICE SIZE	REQ'D FLOW* GPM	RESIDUAL PRESSURE* PSI	BUILDING(S) SERVED
6"	250	75	5211 LAS SOLERAS DRIVE

A FIRE SERVICE IS DEDICATED FOR AUTOMATIC FIRE SPRINKLER SYSTEMS. ALL FIRE SERVICES MUST BE EQUIPPED WITH A REDUCED PRESSURE PRINCIPLE BACKFLOW PREVENTER WITH DETECTOR ASSEMBLY (RPDA). THE BACKFLOW PREVENTER MUST BE LOCATED WITHIN 30' OF THE CONNECTION TO THE WATER MAIN. BACKFLOW PREVENTERS MUST BE LISTED AS APPROVED BY THE UNIVERSITY OF SOUTHERN CALIFORNIA FOUNDATION FOR CROSS CONNECTION CONTROL AND HYDRAULIC RESEARCH. \*PEAK FLOW IS IN GALLONS PER MINUTE.

\*RESIDUAL PRESSURE IN POUNDS PER SQUARE INCH AT THE LISTED FIRE FLOW AT THE POINT OF CONNECTION TO MAIN.

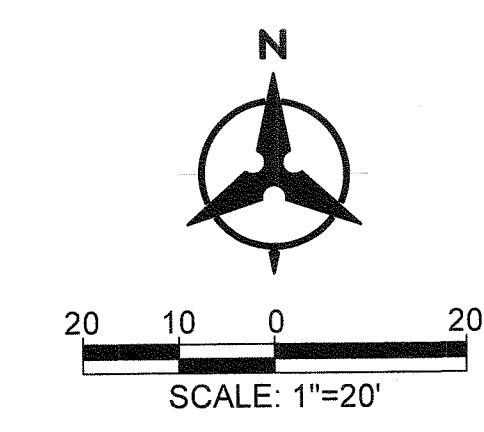
NOTE: PIPE JOINTS SHALL BE MECHANICALLY RESTRAINED PER UPDATED COSFW WATER DIVISION DETAIL 10A. SEE COSFW WATER DIVISION STANDARD DETAIL 10B FOR DIAGRAMATIC REPRESENTATION OF JOINT RESTRAINT LENGTHS.

THIS RECORD DRAWING HAS BEEN COMPLETED ON A COPY OF THE SEALED ENGINEERING DRAWING FOR THIS PROJECT. THE INFORMATION SHOWN HEREON IS BELIEVED TO BE ACCURATE BASED ON LIMITED FIELD OBSERVATION DURING CONSTRUCTION, AS WELL AS DATA FURNISHED BY THE INSTALLER.

**RECORD MAPPING**

	INITIALS	DATE
AS BUILT		
VALVE MAPS		
GIS (MAPPING)		
Inspector Approved		

EXISTING UTILITIES AND APPURTENANCES SHOWN ON THE CONSTRUCTION DOCUMENTS ARE APPROXIMATE. ACCURACY, LOCATION, AND COMPLETENESS OF UNDERGROUND UTILITIES IS THE SOLE RESPONSIBILITY OF THE CONTRACTOR AND SHOULD BE VERIFIED, BY ANY MEANS NECESSARY, PRIOR TO THE INITIATION OF CONSTRUCTION. EXISTING UTILITIES NOT SHOWN ON THE DOCUMENTS ARE LIKELY TO EXIST.



**Bohannon & Huston**  
 www.bhinc.com 800.877.5332

NOTE: THIS PUBLIC WATERLINE IMPROVEMENT PLAN IS FOR BIDDING PURPOSES ONLY. PRIOR TO CONSTRUCTION AN AGREEMENT TO CONSTRUCT AND DEDICATE PUBLIC IMPROVEMENTS (ACD) MUST BE EXECUTED. THE CONTRACTOR IS RESPONSIBLE FOR COORDINATING WITH THE OWNER TO PREPARE AND SUBMIT THE ACD TO THE CITY OF SANTA FE PUBLIC UTILITIES WATER DIVISION.

**Bohannon & Huston**  
 www.bhinc.com 800.877.5332

P:\20220349\CDP\Plans\General\20220349\_UPO2.dwg  
 Tue, 21-Feb-2023 - 8:29:am, Plotted by: BORTEGA