

A. CHRISTOPHER PURVIS ARCHITECTS

Historic Districts Review Board
City of Santa Fe, City Hall
Santa Fe NM 87501

Tuesday, November 26, 2024

RE: 1320 Upper canyon road

Enclosed (1) 24"x36" copies

A-1	Site Plans	11/24/24
A-2	House Floor Plans	11/25/24
A-3	Garage Floor Plan & Elevations	11/25/24
A-4	House Elevations North&South	11/25/24
A-5	House Elevations East & West	11/25/24

Photographs of existing elevations

PZR completed (copy to Zoning)

Dear Lani and
Members of the Historic Districts Review Board

In 1965 the original house was designed by John Midyette. Subsequently a guest house was appended to the east elevation in 1977 and a study was added to the west elevation in 1990. Finally the front entry was reworked in 2000 All by John Midyette. We are proposing to remodel the Guest house on the north and south elevations. And build a new detached garage as indicated on the attached drawings. As Follows:

For the Garage

- 1) The Garage shall be stuccoed El rey cementitious Buckskin Color
- 2) The windows which shall be wood TDL aluminum Clad white as indicated
- 4) The Garage will be 600 sqft.
- 5) The Finished height is proposed at 12'-8"
- 6) There will be a skylight in the roof of the garage and one exterior sconce
- 7) The garage doors will be Wood clad in diagonal panels stained warm brown
- 8) there will be a small eave on the east side for drainage
- 9) There will be a sconce outside either door as attached

For the Casita Remodel/addition

- 1) The Casita addition is 170 square feet and will maintain its existing height 12'0"
- 2) The stucco will match the existing El Rey Buckskin,
- 3) The new windows and doors shall be white
- 4) There will be an additional compressor placed on the east side behind the existing coyote fence
- 5) There will be a corridor addition on the south side to facilitate the connection from the guest house to the main house

Please call if you have any questions on the project 982-5461

Sincerely,

A. CHRISTOPHER PURVIS ARCHITECTS



Christopher Purvis.

Exterior stucco color El Rey buckskin




Wood clad color



Pella Clad Color white

Canyon Sconce Large - Possession Point
Outdoor Wall Light Southwest Style



Key Features:

- Dimensions: 11h x 9w x 12e x 4lm
- Lamping: Takes 1 - Type A19 (standard household style) bulb - 100W max.
- UL Approved for Wet/Damp/Dry Locations
- Available in the finishes shown below.

HIDE DESCRIPTION

The Canyon Sconce Large - Possession Point features hand cut holes along the base of the cone and meets the standards set by the International Dark-Sky Association, which seeks to eliminate glare and upward light. The light is directed downward. Mounts to a minimum 5 inch square board. UL approved for wet locations. Hardware only. Note: Only powdercoated finishes are recommended for exterior locations.

Picture in Finish #97-Black Iron.

Note: This fixture will accept a screw-in type LED bulb of equivalent wattage output.


SHOW MORE INFO

SHOW REVIEWS

Price: \$296.00

Availability: Made to Order. Typically ships within 3 weeks

Finish Choices:



Select Finish Choices

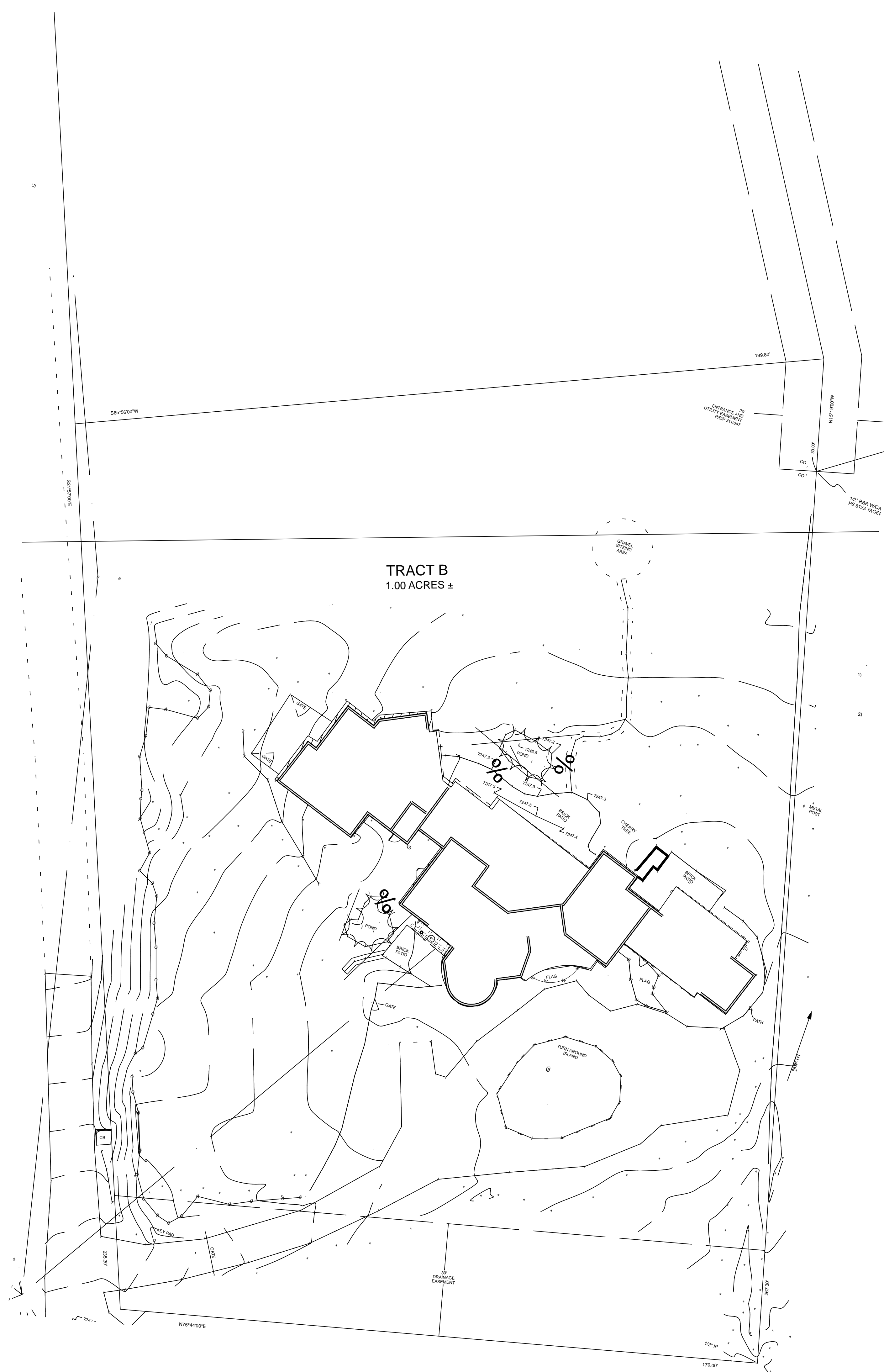


EAST ELEVATION

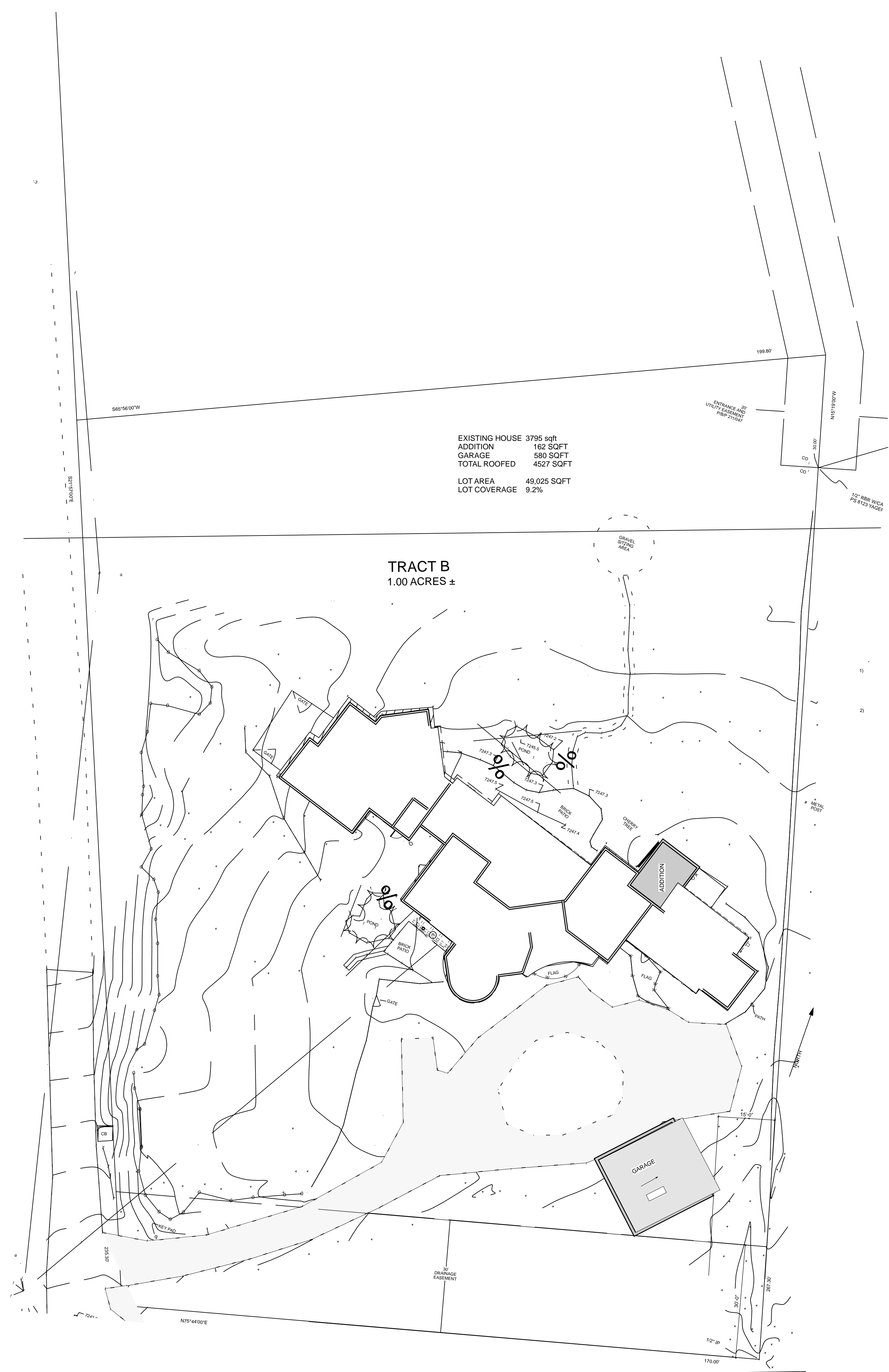


WEST ELEVATION

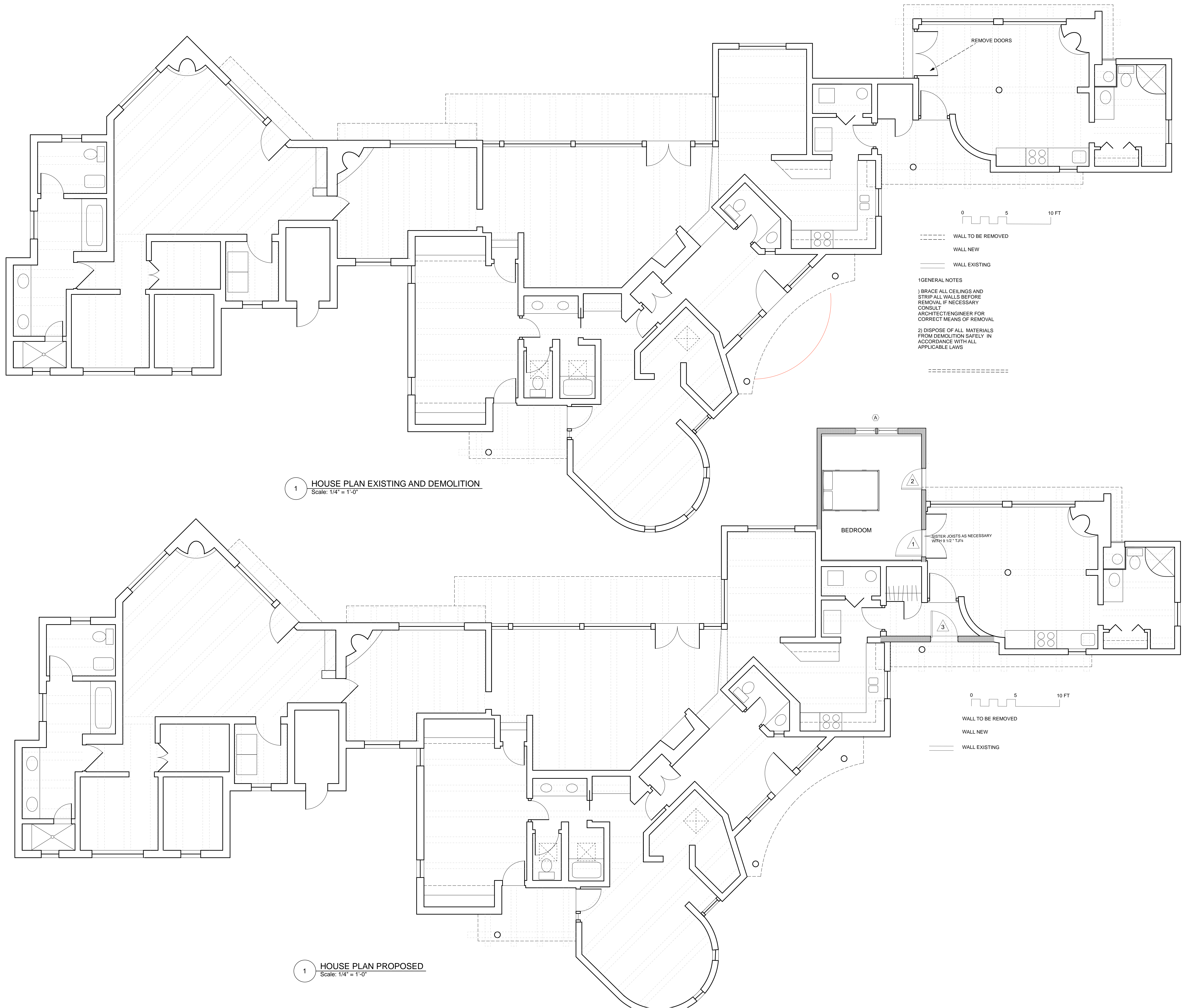
1320 CANYON ROAD



1 SITE PLAN EXISTING
Scale: 1/16" = 1'-0"



1 SITE PLAN PROPOSED
Scale: 1/16" = 1'-0"



1 HOUSE PLAN EXISTING AND DEMOLITION
Scale: 1/4" = 1'-0"

1 HOUSE PLAN PROPOSED
Scale: 1/4" = 1'-0"

0 5 10 FT

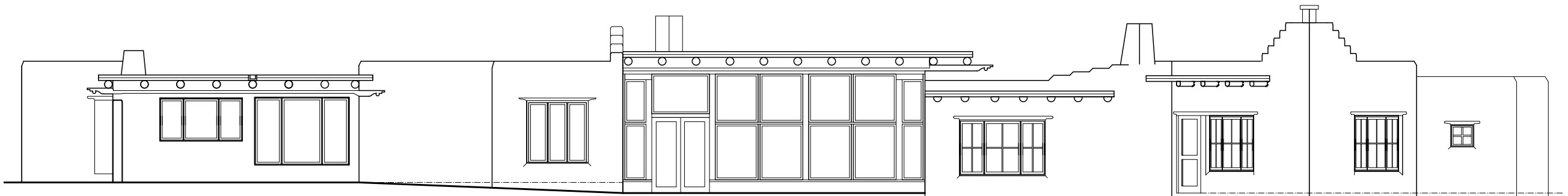
--- WALL TO BE REMOVED
— WALL NEW
— WALL EXISTING

1) GENERAL NOTES

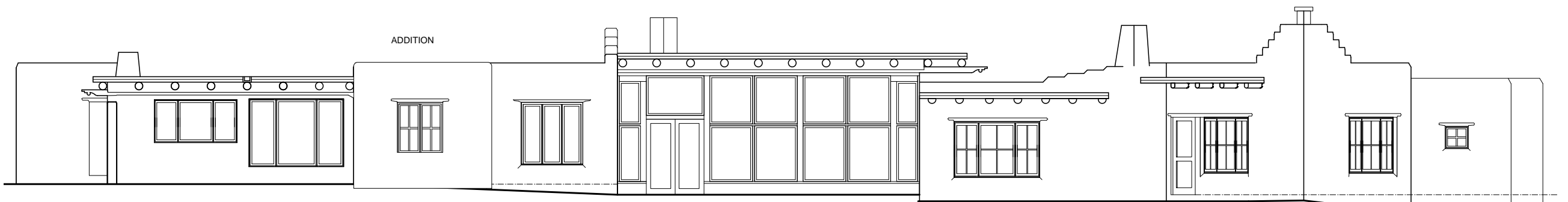
- 1) BRACE ALL CEILINGS AND STRIP ALL WALLS BEFORE REMOVAL IF NECESSARY CONSULT ARCHITECT/ENGINEER FOR CORRECT MEANS OF REMOVAL
- 2) DISPOSE OF ALL MATERIALS FROM DEMOLITION SAFELY IN ACCORDANCE WITH ALL APPLICABLE LAWS

0 5 10 FT

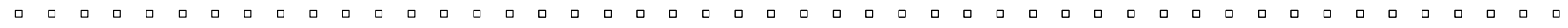
--- WALL TO BE REMOVED
— WALL NEW
— WALL EXISTING



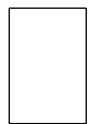
1 NORTH ELEVATIONS EXISTING
Scale: 1/4" = 1'-0"



1 NORTH ELEVATIONS PROPOSED
Scale: 1/4" = 1'-0"



JOB NO. 4804



12/11/24

SCHMEAL GARAGE AND REMODEL
1302 UPPER CANYON ROAD
SANTA FE, NEW MEXICO

PRELIMINARY

A. CHRISTOPHER PURVIS
ARCHITECTS

518 Old Santa Fe trail St1 PMB 373
Santa Fe New Mexico 87505 Tel 505 982 5461
E Mail Architect@ACP-ART.com



1 EAST ELEVATION EXISTING
Scale: 1/4" = 1'-0"



1 EAST ELEVATION PROPOSED
Scale: 1/4" = 1'-0"

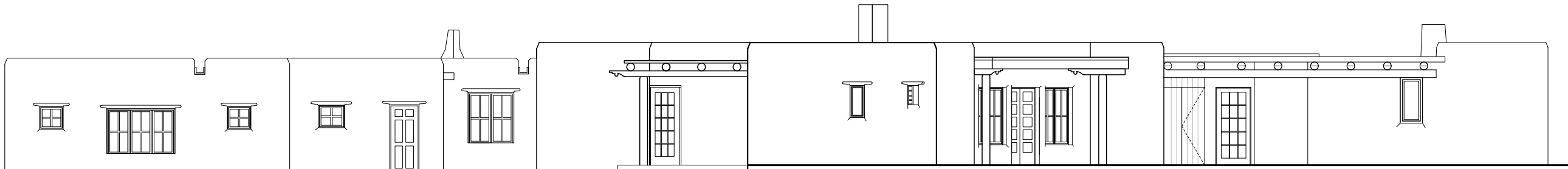
A. CHRISTOPHER BERRY
518 Old Santa Fe Trail S11 PMB 373
Santa Fe, New Mexico 87505 Tel: 505 982 5461
E-Mail: Architect@ACP-ART.com

SCHMEAL GARAGE AND REMODEL
1302 UPPER CANYON ROAD
SANTA FE, NEW MEXICO
PRELIMINARY

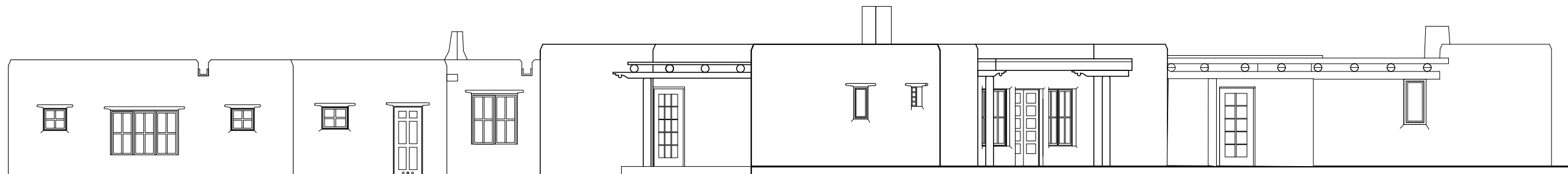
12/11/24



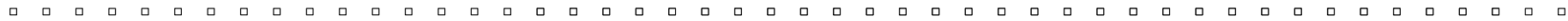
JOB NO. 4804



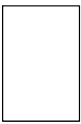
1 SOUTH ELEVATIONS EXISTING
Scale: 1/4" = 1'-0"



1 SOUTH ELEVATIONS PROPOSED
Scale: 1/4" = 1'-0"



JOB NO. 4804

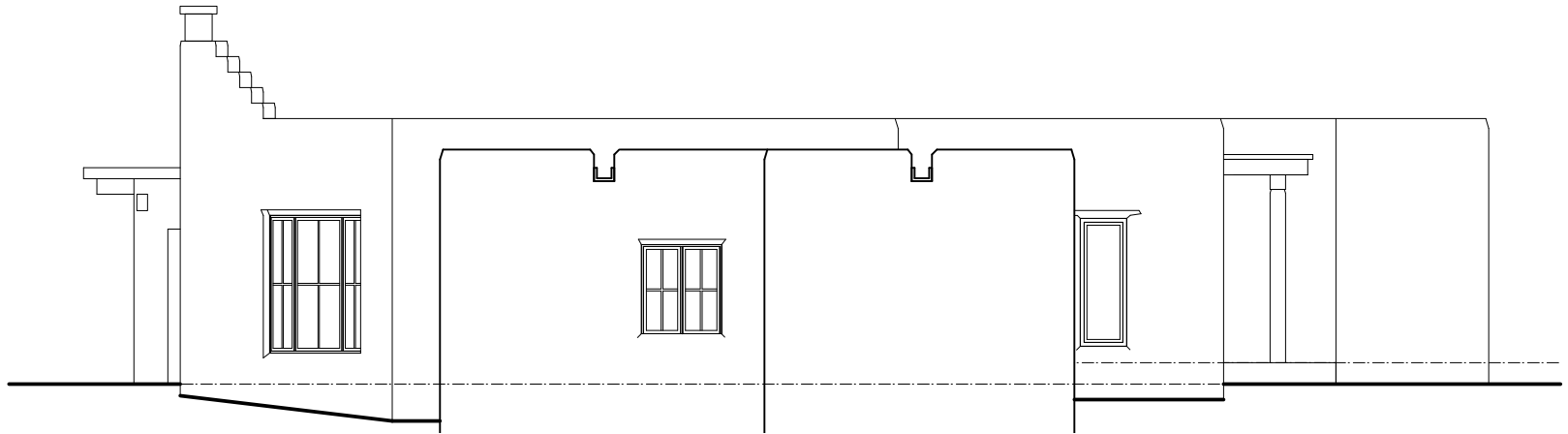


12/11/24

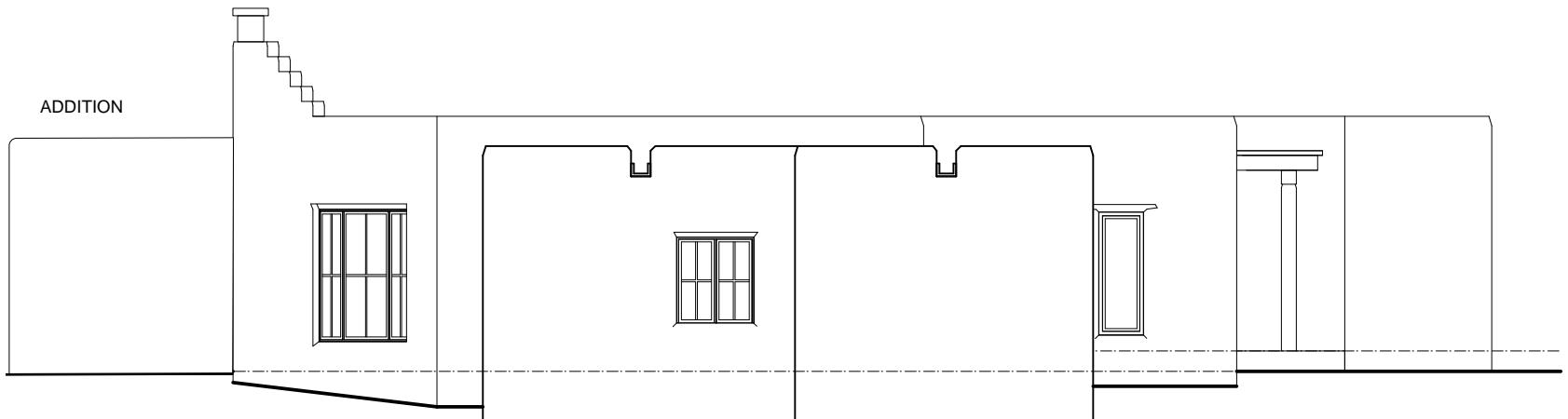
SCHMEAL GARAGE AND REMODEL
1302 UPPER CANYON ROAD
SANTA FE, NEW MEXICO

PRELIMINARY

A. CHRISTOPHER PURVIS
ARCHITECTS
518 Old Santa Fe trail St1 PMB 373
Santa Fe New Mexico 87505 Tel 505 982 5461
E Mail Architect@ACP-ART.com



1 WEST ELEVATION EXISTING
Scale: 1/4" = 1'-0"



1 WEST ELEVATION PROPOSED
Scale: 1/4" = 1'-0"

A. CHRISTOPHER BARRY ARCHITECTS
518 Old Santa Fe Trail S11 PMB 377
Santa Fe, New Mexico 87505 Tel: 505 862 5461
E-Mail: Architect@ACP-ART.com

SCHMEAL GARAGE AND REMODEL
1302 UPPER CANYON ROAD
SANTA FE, NEW MEXICO
PRELIMINARY

12/11/24



JOB NO. 4804